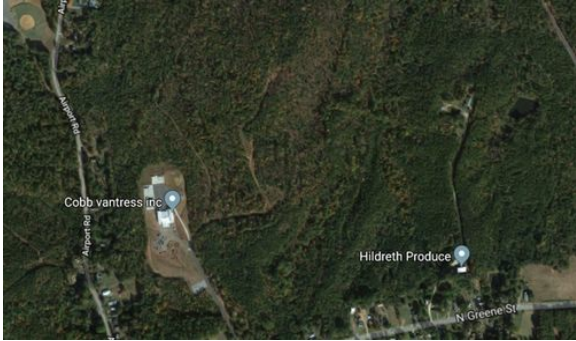


Wadesboro Industrial Park

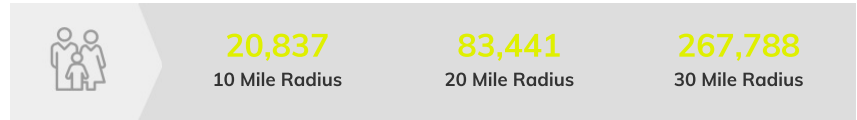
300 Cobb Street | Wadesboro, NC | Anson County
Available Acres: 77.5 | Sale Price: 5000 per acre



Property and Area Description

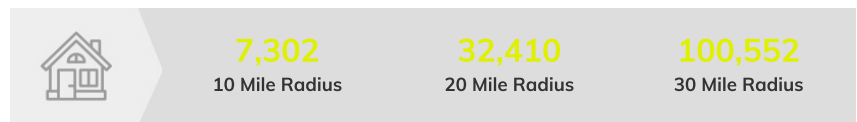
Town-owned business park less than 1 mile from US Hwy 74. Zoned LI. Focus on Food & Beverage sector, but open to other similar light industrial applications.

Population



Source: ESRI®, 2018

Households



Source: ESRI®, 2018

Zoning:	Industrial-Light
Topography:	Mostly flat
Setting:	Industrial Park
Within City Limits:	Yes
Specialty Features:	None
Last Updated:	Mar 6, 2018

Transportation

Nearest 4-Lane Hwy: US Hwy 74 (.7 mi.)

Nearest Interstate: I-74 (41 mi.)

Ingress/Egress Notes: Park is accessed by a dedicated entry road.

Nearest Airport: Anson County (AFP) (3 mi.)

Nearest Commercial Airport: Charlotte Douglas (CLT) (68 mi.)

Rail Served: Unknown

Rail Accessible: Unknown

Rail Infrastructure in Place: Unknown

Utilities

Electric: Duke Energy

Natural Gas: Piedmont Natural Gas

Water: Town of Wadesboro

Sewer: Town of Wadesboro

Telecommunications: Alltel

Economic Development Contact

John B. Marek

AnsonEDP

107-A East Wade Street

Wadesboro, North Carolina 28170

(704) 690-4936 | John@AnsonEDP.com

John Marek | Executive Director | Anson County EDC
107-A East Wade Street | Wadesboro, NC 28170 | (704) 690-4936 | john@ansonedp.com