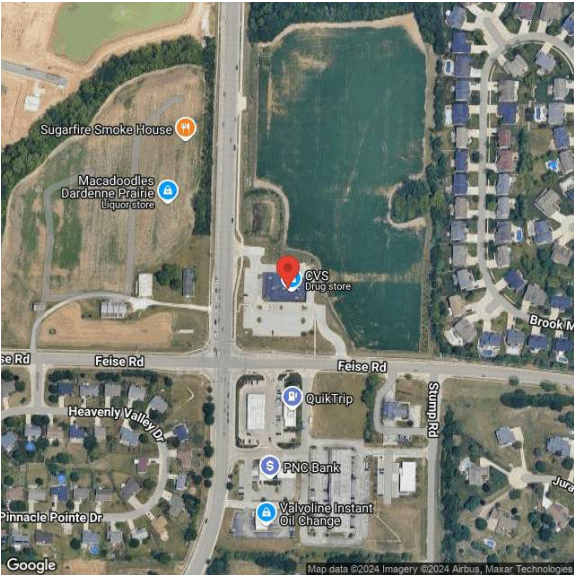


CVS Pharmacy
1580 Bryan Rd | O'Fallon, MO | US | St. Charles County
Available SF: 13,225 | Sale Price: \$3,600,000



Building Type:	Investment, Retail
Available SF:	13,225
Total SF:	13,225
Year Built:	2015
Sale Price:	\$3,600,000
Last Updated:	May 7, 2025

Economic Development Contact

Patrick McKeehan
CITY OF O'FALLON, MISSOURI
100 NORTH MAIN STREET
O'FALLON, MISSOURI 63366
(636) 379-5510 | pmckeehan@ofallon.mo.us

Realtor/Owner Contact

Glen Kunofsky
| gkunofsky@nnnpro.com

Property and Area Description

NNN Pro is pleased to present the exclusive listing for a CVS

Population

	329,409	826,242	1,871,729
	10 Mile Radius	20 Mile Radius	30 Mile Radius

Source: ESRI®, 2024

Households

	124,986	326,161	779,536
	10 Mile Radius	20 Mile Radius	30 Mile Radius

Source: ESRI®, 2024

Transportation

Rail Served: No
Rail Accessible: No
Rail Infrastructure in Place: Unknown

Utilities

Electric: Ameren