

808 E Wakefield Ave  
808 E Wakefield Ave, Suite 3 | Sikeston, MO | US | Scott County  
Available SF: 1,150 | Lease Rate: \$4,025



Building Type:	Office
Available SF:	1,150
Total SF:	1,150
Year Built:	1988
Lease Rate:	\$4,025
Last Updated:	Sep 22, 2025

Economic Development Contact

Marcie Lawson  
Bootheel Progress with Partnership  
215 N New Madrid Street  
Sikeston, MO 63801  
(573) 471-2498 | marcie.lawson@sikeston.net

Sarah Ezell  
215 N New Madrid Street  
Sikeston, Missouri 63801  
| sarah.ezell@sikeston.net

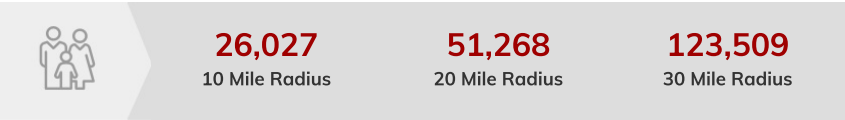
Realtor/Owner Contact

Matt Huber  
| mhuber@lorimont.com

Property and Area Description

Prominently situated on a high-traffic road, the property at 808 E Wakefield Ave in Sikeston, MO offers excellent visibility for businesses seeking a prime location. Boasting a spacious medical/office building, this property provides an ideal opportunity for tenants looking to establish a strong presence. The large building features versatile space that can accommodate various professional uses. With its impressive road frontage and convenient accessibility, this property presents a compelling opportunity for businesses to thrive and make a lasting impression. Discover the vibrant community surrounding the property in Sikeston, MO. This thriving area provides tenants with convenient access to an array of local amenities and attractions. Enjoy the nearby culinary delights at popular eateries such as Lambert's Cafe and Jay's Krispy Fried Chicken. Experience the dynamic atmosphere with proximity to local banks, shops, and the historic Sikeston Depot Museum, perfect for both business and leisure. The bustling surroundings of this location create an ideal setting for office tenants seeking to thrive in a well-connected and lively community.

Population



Source: ESRI®, 2025

Households



Source: ESRI®, 2025

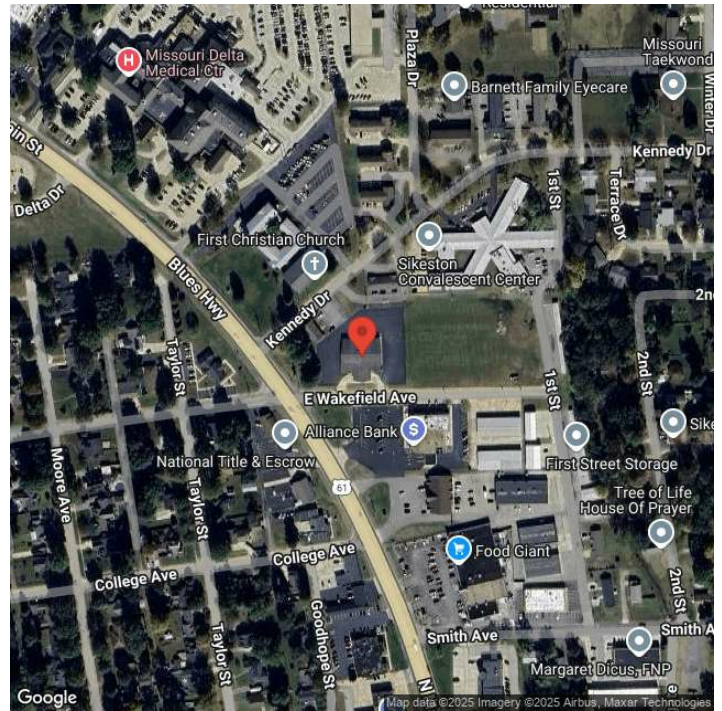
Transportation

Rail Served: No  
Rail Accessible: No  
Rail Infrastructure in Place: Unknown

Utilities

Electric: Ameren

## Property Images



Marcie Lawson | CEO | Sikeston Economic Development  
128 N. New Madrid St. | Sikeston, MO 63801 | (573) 471-2498 | [marcie.lawson@sikeston.net](mailto:marcie.lawson@sikeston.net)