

Showroom/Warehouse in Chestnut Expressway Industrial Park

1955 E Phelps St, Suite 1955 E. Phelps (Sublease) | Springfield, MO | US |
Greene County
Available SF: 9,946 | Lease Rate: \$9



Building Type:	Industrial, Office
Available SF:	9,946
Total SF:	9,946
Year Built:	1996
Lease Rate:	\$9
Last Updated:	Jun 2, 2025

Economic Development Contact

Benjamin Vickers
Springfield Area Chamber of Commerce
202 S. John Q. Hammons Parkway
Springfield, MO 65806
| ben@springfieldchamber.com

Realtor/Owner Contact

Lee McLean
| lee.mclean@svn.com

Property and Area Description

Thank you for viewing this Industrial showroom building for sublease just north of Trafficway off Chestnut Expy. in Springfield, MO. This property is a total of 9,946 SF with 2 offices, an open showroom area and a kitchenette break room. The main warehouse features 4,290 SF, 3 14-foot tall drive-in doors, and an 1,102 SF wash bay with a floor drain. The property is centrally located in Chestnut Expressway Industrial Park with a great multipurpose layout. This property is listed for \$9.00/SF/(NNN). Please email, call or text listing agent for more information. Chestnut Expressway Industrial Park, just north of Trafficway off Chestnut Expressway. Neighboring businesses include Fisk Transportation, Braum's, CARSTAR Tanner's Paint and Body, Premier Sports Cars, Sechler Electric Inc., Corbett Law Firm, Panda Express, Ron's Racing Collectibles, PCnet, Brokate Janitorial and many other national and local companies. Lee McLean III, SIOR, CCIM serves as a Senior Advisor for SVN Commercial in the Springfield Missouri metro area. Lee holds the SIOR & CCIM designation, a Brokers-Associate real estate license and ranks in the top 1% of SVN International.

Population



Source: ESRI®, 2024

Households

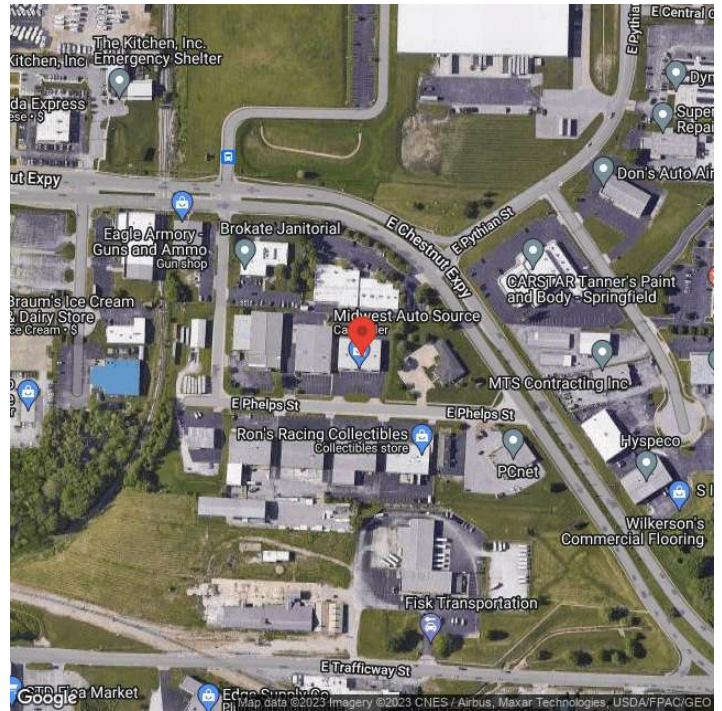


Source: ESRI®, 2024

Transportation

Rail Served: No
Rail Accessible: No
Rail Infrastructure in Place: Unknown

Property Images



Ben Vickers | Manager of Business Development | Springfield Area Chamber of Commerce
202 S. John Q. Hammons Parkway | Springfield, MO 65806 | (417) 450-6751 | ben@springfieldchamber.com