

6401-25 W. Florissant Ave.  
6401 W Florissant Ave | Jennings, MO | US | St. Louis County  
Available SF: 140,000 | Sale Price: \$1,295,000



Building Type:	Industrial
Available SF:	140,000
Total SF:	140,000
Sale Price:	\$1,295,000
Last Updated:	Dec 13, 2024

Economic Development Contact

Benjamin C. Sutphin  
City of Jennings  
2120 Hord Avenue  
Jennings, Missouri 63136  
(314) 388-1164

Cherly Balke  
Cherly Balke  
2120 Hord Avenue  
Jennings, Missouri 63136  
(314) 388-1164

Realtor/Owner Contact

Peter Newton  
| peter@hillikercorp.com

Property and Area Description

140,000 Sq. Ft. Office/Warehouse on 7.8 Acres with 30,000 Sq. Ft. Modern Office,200 Car Parking,Heavy Power, Abundant Outside Storage.

Population



Source: ESRI®, 2024

Households



Source: ESRI®, 2024

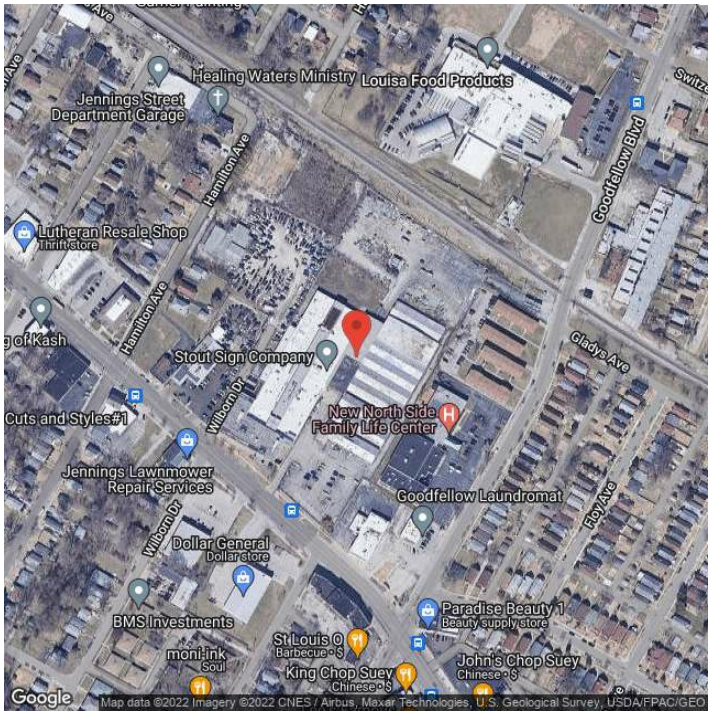
Transportation

Rail Served: No  
Rail Accessible: No  
Rail Infrastructure in Place: Unknown

Utilities

Electric: Ameren

# Property Images



Joe Dickerson | Director, Business Attraction | Greater St. Louis, Inc.  
One Metropolitan Square, Ste. 220 | St. Louis, MO 63102 | (314) 444-1118 | [Joe@GreaterSTLinc.com](mailto:Joe@GreaterSTLinc.com)