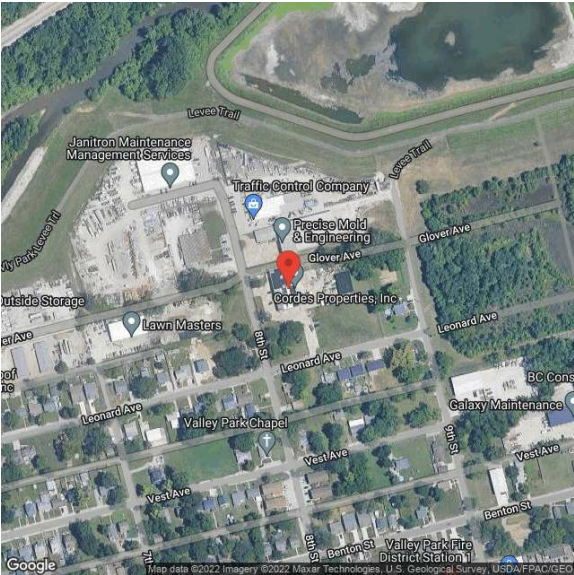


501 8th Street
501 8th St, Suite 501 8th Street | Valley Park, MO | US | St. Louis County
Available SF: 13,300



Building Type:	Industrial
Available SF:	13,300
Total SF:	13,300
Last Updated:	Jul 21, 2025

Realtor/Owner Contact

Tyler Hyde
| thyde@intcre.com

Property and Area Description

Available for lease is ~13,300 SF on +/- 2 acres. Currently about acre of concrete and fenced outside storage which can be expanded for up to another of an acre. One 10,000sf building with 24 clear at the peak and 20 clear at the low point. One dock and 3 grade level drive-in doors. Heavy power with 1,200 amps of 3 phase and a separate 400 amps of single phase. Located in Valley Park at the corner of Lenord Avenue and 8th Street.

Population

	2,010,205	2,820,411	3,152,557
	25 Mile Radius	50 Mile Radius	75 Mile Radius

Source: ESRI®, 2024

Households

	848,054	1,172,397	1,305,517
	25 Mile Radius	50 Mile Radius	75 Mile Radius

Source: ESRI®, 2024

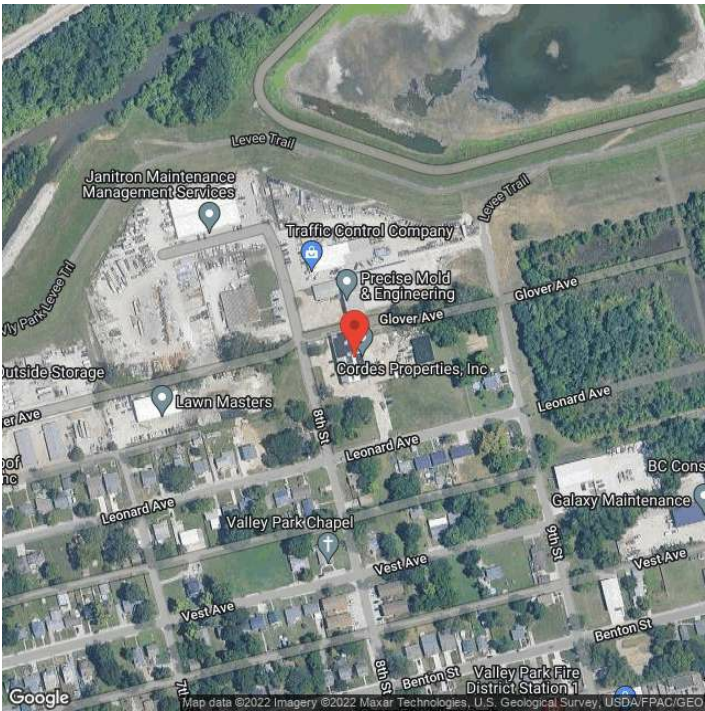
Transportation

Rail Served: Yes
Rail Served By: Union Pacific Railroad
Rail Accessible: Yes
Rail Infrastructure in Place: Unknown
Rail Contact: Kate M. Betsworth
Rail Contact Phone: 402-544-3237
Rail Contact Email: kmbetswo@up.com

Utilities

Electric: Ameren

Property Images



Joe Dickerson | Director, Business Attraction | Greater St. Louis, Inc.
One Metropolitan Square, Ste. 220 | St. Louis, MO 63102 | (314) 444-1118 | Joe@GreaterSTLinc.com