

3728 Market Street
3728 Market St | St. Louis, MO | US | St. Louis City County
Available SF: 40,903 | Lease Rate: \$5



Building Type:	Industrial
Available SF:	40,903
Total SF:	40,903
Lease Rate:	\$5
Last Updated:	May 26, 2025

Economic Development Contact

Michelle Stuckey
St. Louis Economic Development Partnership
120 S. Central, Suite 1200
St. Louis, MO 63105
(314) 615-7663 | mstuckey@stlpartnership.com

Shavette Wayne-Jones
St. Louis Development Corporation
1520 Market Street, Suite 2000
St. Louis, MO 63103
(314) 657-3757 | WayneS@stlouis-mo.gov

Realtor/Owner Contact

Brian Bush
| brian.bush@cbre.com

Property and Area Description

+/-40,903 SF Warehouse Available for Sublease + 40,903 SF available + 2,776 office/showroom + 22' clear height + 17 docks with edge of dock levelers + 1-12'w x 14'h ramped drive-in + Primarily 31'3" x 28'6" column spacing +LED warehouse lighting with motion sensors + 5 dedicated trailer stalls + 10 dedicated car parking spaces + HVLS fans + Gas fired + infrared warehouse heating + 480 Volt 3-Phase electrical service + Sublease expiration: 7/31/2030 + NEW reduced sublease rate: \$5.00/SF Gross (excludes utilities) Located at I-64 & Vandeventer Ave with Building Signage Along I-64

Population

	2,119,659 25 Mile Radius	2,814,880 50 Mile Radius	3,226,210 75 Mile Radius
--	-----------------------------	-----------------------------	-----------------------------

Source: ESRI®, 2024

Households

	892,676 25 Mile Radius	1,160,319 50 Mile Radius	1,323,892 75 Mile Radius
--	---------------------------	-----------------------------	-----------------------------

Source: ESRI®, 2024

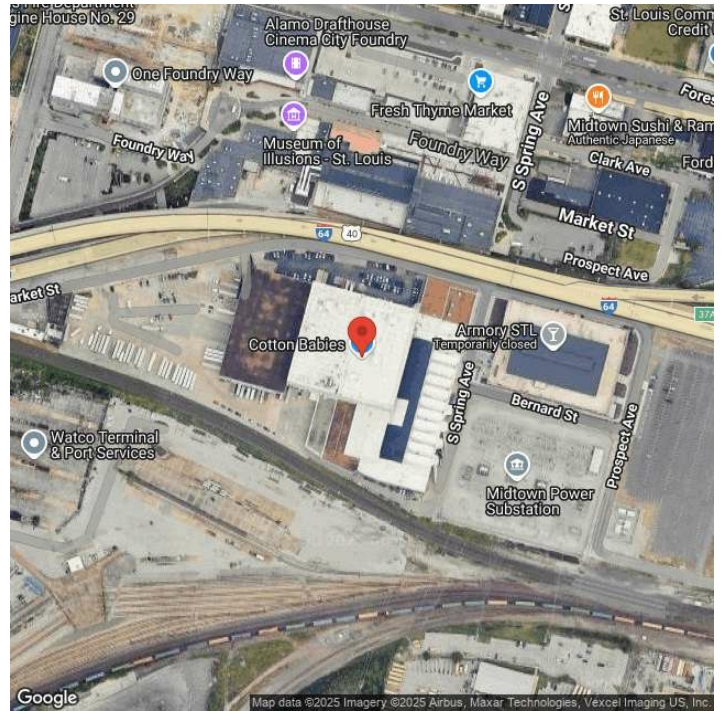
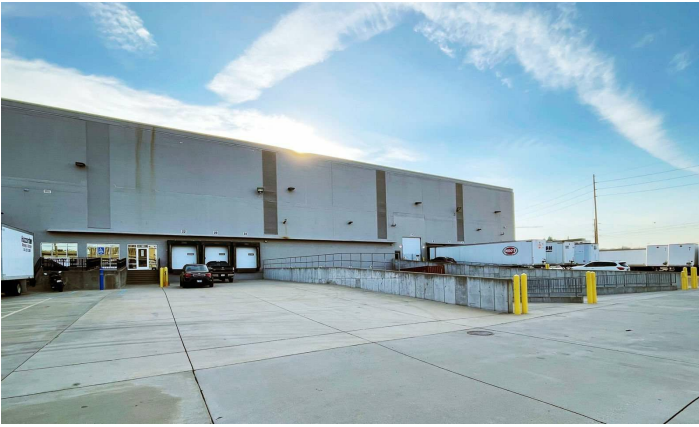
Transportation

Rail Served: Yes
Rail Served By: Union Pacific Railroad
Rail Accessible: Yes
Rail Infrastructure in Place: Unknown
Rail Contact: Kate M. Betsworth
Rail Contact Phone: 402-544-3237
Rail Contact Email: kmbetswo@up.com

Utilities

Electric: Ameren

Property Images



Joe Dickerson | Director, Business Attraction | Greater St. Louis, Inc.
One Metropolitan Square, Ste. 220 | St. Louis, MO 63102 | (314) 444-1118 | Joe@GreaterSTLinc.com