



Building Type:	Office
Available SF:	62,000
Total SF:	49,486
Number of Stories:	2
Ceiling Peak:	10 Ft.
Ceiling Eaves:	10 Ft.
Expandable:	No
Zoning:	Industrial-Light
Site Size:	43.00 Acres
Year Built:	1956
Specialty Features:	Cold Storage
Can Subdivide:	No
Within City Limits:	Yes
Construction Type:	Concrete Block
Floor Type:	Concrete-Reinforced
Lease Terms:	Triple Net
Lease Rate Note:	See Property and Area Description
Last Updated:	Feb 21, 2019

Economic Development Contact

Jenelle Wolber, Director, Business & Economic Growth Services
Quad Cities Chamber
331 W. 3rd Street, Suite 100
Davenport, IA 52801
(563) 823-2679 | JWolber@quadcitieschamber.com

Realtor/Owner Contact

Marge Stratton
Mel Foster Commercial Company
563-324-4488 | mstratton@melfosterco.com

Property and Area Description

Office space is \$5.00 sf + CAM, Tax, Utilities & Tenant Improvements. Lease rates are negotiable with tenant build out.

Population

	261,281 10 Mile Radius	339,228 20 Mile Radius	418,267 30 Mile Radius
---	----------------------------------	----------------------------------	----------------------------------

Source: ESRI®, 2024

Households

	112,307 10 Mile Radius	143,436 20 Mile Radius	176,258 30 Mile Radius
---	----------------------------------	----------------------------------	----------------------------------

Source: ESRI®, 2024

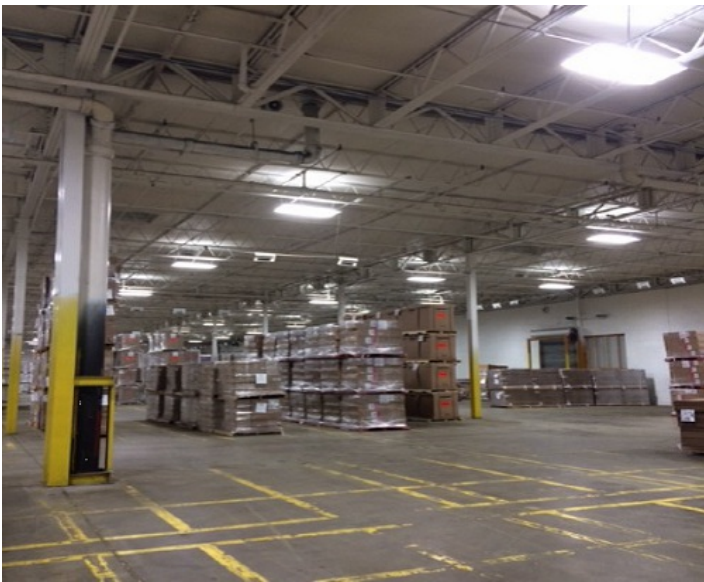
Transportation

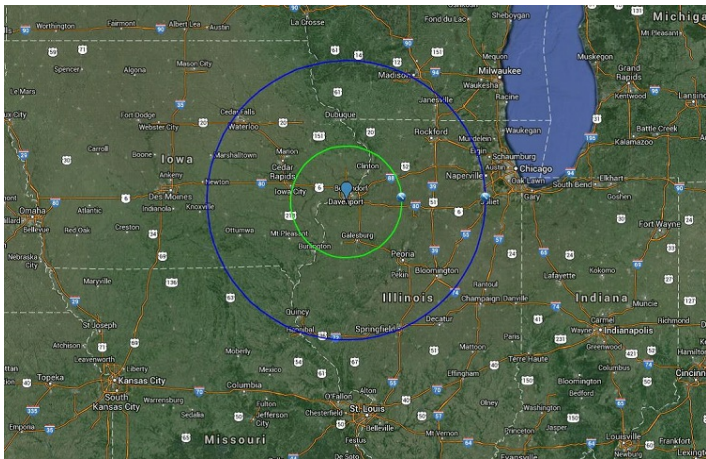
Nearest Highway: US 67 (1.00 mi.)
Nearest Interstate: I-280 (1.00 mi.)
Nearest Airport: Moline/QC International(MLI) (3.00 mi.)
Nearest Commercial Airport: Quad Cities International Airport (MLI) (3.00 mi.)
Rail Served: Yes
Rail Served By: Other
Rail Infrastructure in Place: Yes

Utilities

Electric: Mid American Energy
Natural Gas: Mid American Energy
Water: Village of Milan
Sewer: Village of Milan

Property Images





Tami Petsche | Vice President, Business & Economic Growth | Quad Cities Chamber
331 W 3rd Street | Davenport, IA 52801 | (563) 823-2655 | tpetsche@quadcitieschamber.com