

4391 16th Street
4391 16th St | Moline, IL | US | Rock Island County
Available SF: 24,195 | Lease Rate: \$11



Building Type:	Retail
Available SF:	24,195
Total SF:	24,195
Zoning:	B-4
Lease Rate:	\$11
Last Updated:	Jun 16, 2025

Economic Development Contact

Chris Mathias, Community & Economic
Development Director
City of Moline
619 16th Street
Moline, IL 61265
(309) 524-2032 | cmathias@moline.il.us

Realtor/Owner Contact

Ethan Simons

Property and Area Description

25,195 SF former Best Buy box with high ceilings located in shopping center on prime corner with excellent visibility, very high traffic counts and ample parking. One loading dock. Pylon signage available. Strong regional and national tenant mix in neighborhood including Big Lots, Planet Fitness, Famous Footwear, Party City and Southpark Mall. Available for occupancy after 6/30/25.

Population

	279,666 10 Mile Radius	347,405 20 Mile Radius	425,273 30 Mile Radius
--	----------------------------------	----------------------------------	----------------------------------

Source: ESRI®, 2024

Households

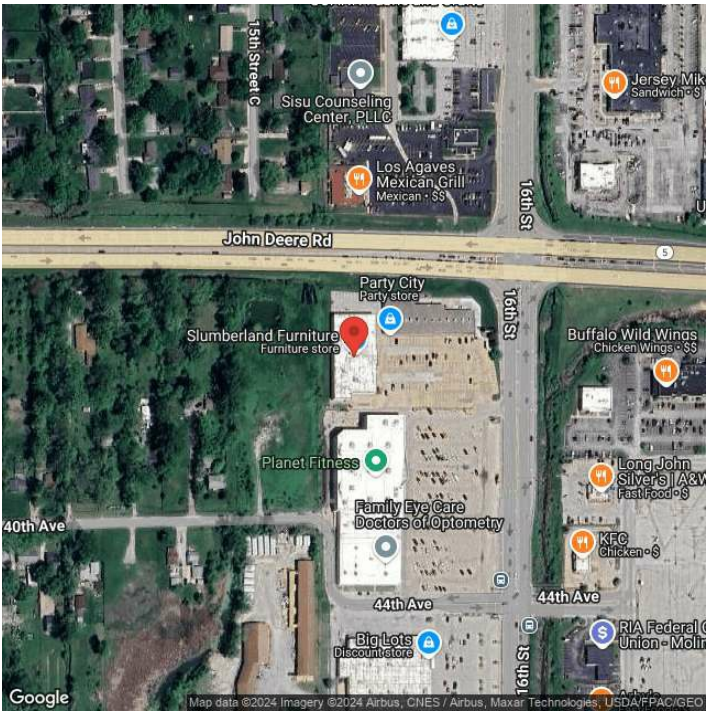
	117,838 10 Mile Radius	145,301 20 Mile Radius	177,460 30 Mile Radius
--	----------------------------------	----------------------------------	----------------------------------

Source: ESRI®, 2024

Transportation

Rail Served: No
Rail Accessible: No
Rail Infrastructure in Place: Unknown

Property Images



Tami Petsche | Vice President, Business & Economic Growth | Quad Cities Chamber
331 W 3rd Street | Davenport, IA 52801 | (563) 823-2655 | tpetsche@quadcitieschamber.com