

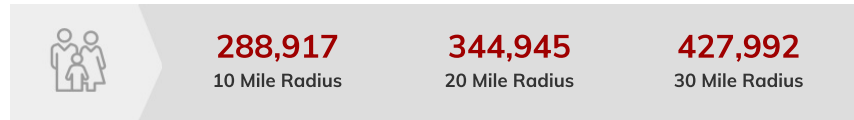
**200 S Bellingham Road**  
 200 S Bellingham St | Riverdale, IA | US | Scott County  
 Available SF: 25,260 | Lease Rate: \$6.5



### Property and Area Description

25,260 SF crane served / heavy power building for lease. 24,000 SF (200' x 120') with 24' ceiling. (2) 5-ton cranes with 17' under beam height. (2) 10-ton cranes w/ 15'-2" under beam height. 2000 amp power, full sprinkler system and compressed air-lines. (1) drive in ramp door (13' w x 14' h), (1) drive in ramp door (14' w x 16' h). Dock high covered platform w / (1) leveler and room for 6 trucks. (2) doors at dock platform (10' x 10' each). "in plant" enclosed area for inspections and air compressor. Fenced area for outside storage. 1,260 SF office area includes private office, reception, male and female locker rooms and restrooms.

### Population



Source: ESRI®, 2024

### Households



Source: ESRI®, 2024

Building Type:	Industrial
Available SF:	25,260
Total SF:	25,260
Zoning:	M-1
Lease Rate:	\$6.5
Last Updated:	Apr 21, 2025

### Transportation

Rail Served: No  
 Rail Accessible: No  
 Rail Infrastructure in Place: Unknown

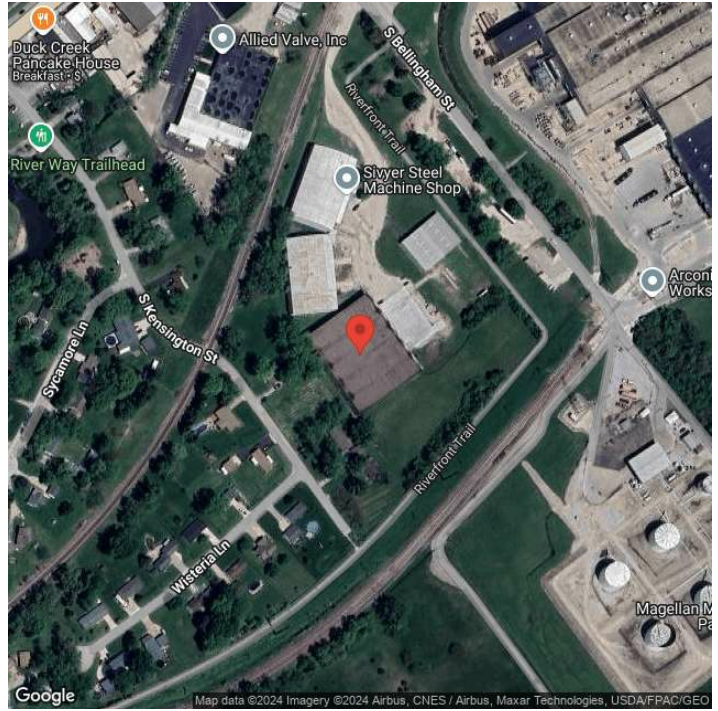
### Economic Development Contact

Mayor, Sonya Paddock  
 City of Riverdale  
 110 Manor Drive  
 Riverdale, Illinois 52722  
 (563) 355-2511 | riverdale@mchsi.com

### Realtor/Owner Contact

Richard Schaefer

## Property Images



Tami Petsche | Vice President, Business & Economic Growth | Quad Cities Chamber  
331 W 3rd Street | Davenport, IA 52801 | (563) 823-2655 | [tpetsche@quadcitieschamber.com](mailto:tpetsche@quadcitieschamber.com)