

Adcraft HQ and Retail
1300 19th Ave NW | Clinton, IA | US | Clinton County
Available SF: 36,000 | Lease Rate: \$16



Building Type:	Retail
Available SF:	36,000
Total SF:	36,000
Lease Rate:	\$16
Last Updated:	Jun 16, 2025

Economic Development Contact

Andy Sokolovich
Grow Clinton
721 South 2nd Street
Clinton, IA 52732
(563) 242-4536 |
asokolovich@clintondevelopment.com

Realtor/Owner Contact

Matthew Brisch
| mbrisch@howesandjefferies.com

Property and Area Description

To Be Built and Coming Soon - Prime Retail/Food Service 3,000 SF Space Available in August 2025 at entrance of Lyons Business and Technology Park Be a part of the new development and expansion in the Lyons Business and Technology Park. High-visibility corner location at the intersection of Mill Creek Parkway and 19th Avenue North in Clinton, Iowa. Up to 3,000 square feet of flexible retail/restaurant space. New construction with modern amenities, finishes, and fiber optic. Excellent signage opportunities to attract customers. Join other successful businesses in the expansion of the area. Available August 2025.

Population

	40,004 10 Mile Radius	80,657 20 Mile Radius	336,789 30 Mile Radius
--	---------------------------------	---------------------------------	----------------------------------

Source: ESRI®, 2024

Households

	16,680 10 Mile Radius	33,829 20 Mile Radius	141,130 30 Mile Radius
--	---------------------------------	---------------------------------	----------------------------------

Source: ESRI®, 2024

Transportation

Rail Served: No
Rail Accessible: No
Rail Infrastructure in Place: Unknown

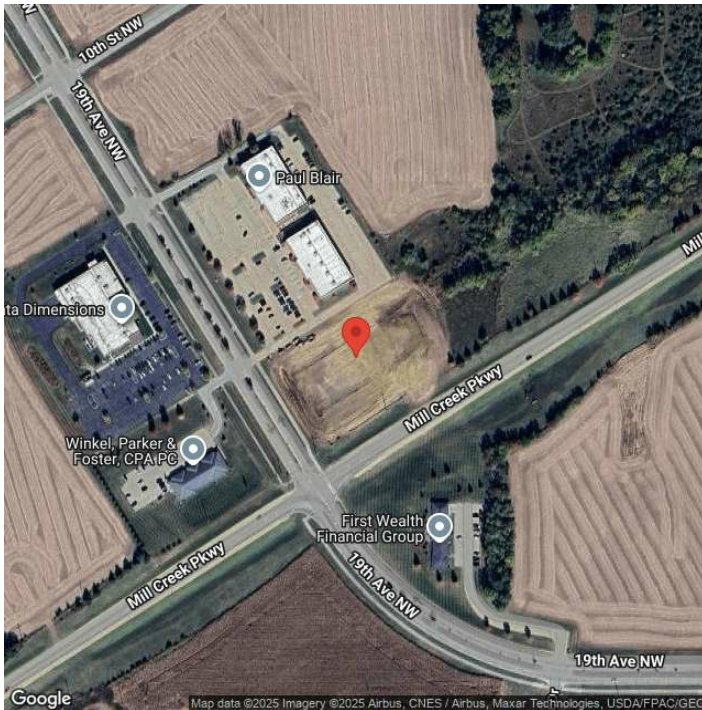
Property Images



ADCRAFT HQ AND RETAIL
COMING SOON
 1300 19 AVE NW, CLINTON, IA



▶▶▶▶▶ **COMING SOON** ◀◀◀◀◀



Tami Petsche | Vice President, Business & Economic Growth | Quad Cities Chamber
 331 W 3rd Street | Davenport, IA 52801 | (563) 823-2655 | tpetsche@quadcitieschamber.com