



Building Type:	Retail, Office
Available SF:	55,185
Total SF:	55,185
Number of Stories:	8
Lease Rate:	\$10.75
Last Updated:	Jul 14, 2025

Economic Development Contact

Sid Juwarker, Vice President of Economic Development
Greater Des Moines Partnership
700 Locust Street, Suite 100
Des Moines, IA 50309
(515) 286-4694 | sjuwarker@dsmpartnership.com

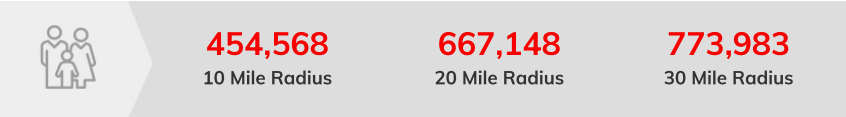
Realtor/Owner Contact

Tyler Dingel

Property and Area Description

Capital Square is an eight-story Class A office and retail building in the heart of downtown Des Moines. Its beautiful open atrium design provides an abundance of natural light, versatile and substantial floor plates, and fantastic downtown views. The building offers multiple access points to the Des Moines Skywalk System and community amenities, and there are street and skywalk level retail opportunities off Walnut and Locust Streets. Adjacently located to and part of Cowles Commons, the building has grade level access to the beautiful newly renovated plaza and all its community events. Capital Squares professional Class A image offers a unique opportunity to a variety of office and retail users in the downtown market

Population



Source: ESRI®, 2024

Households

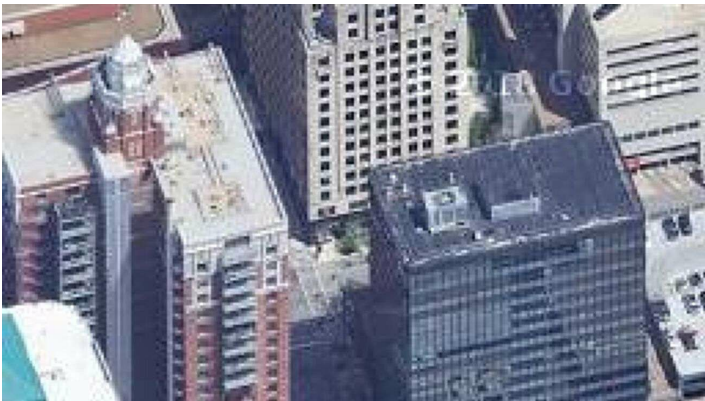
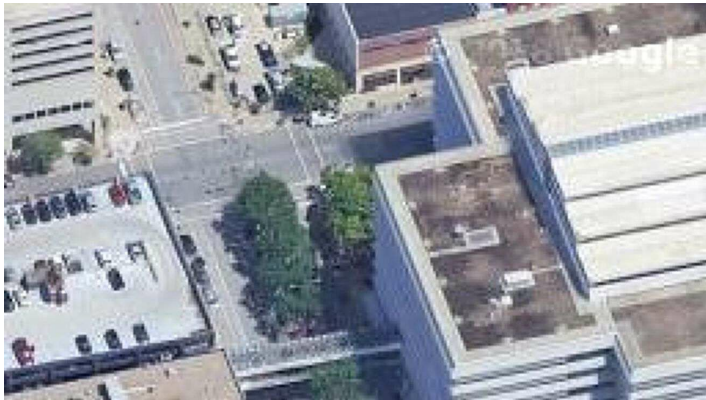
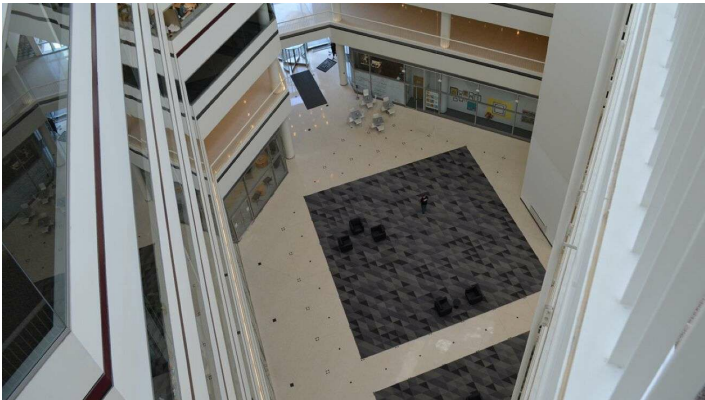
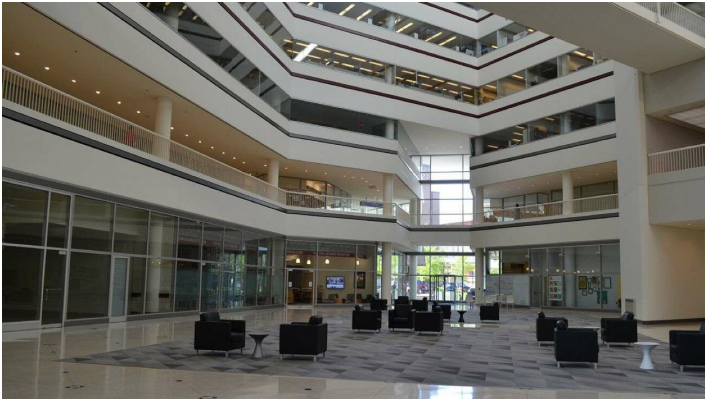


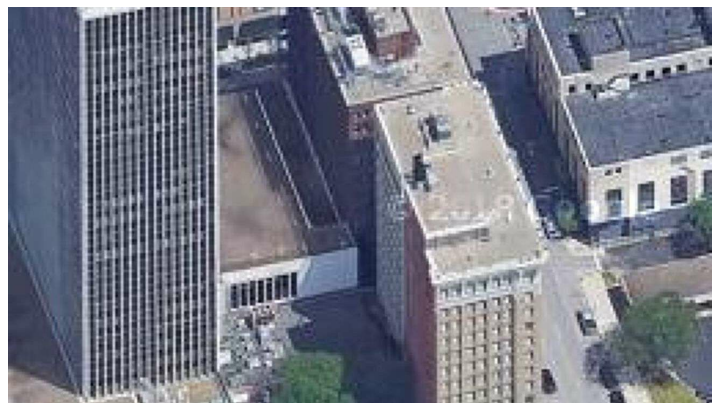
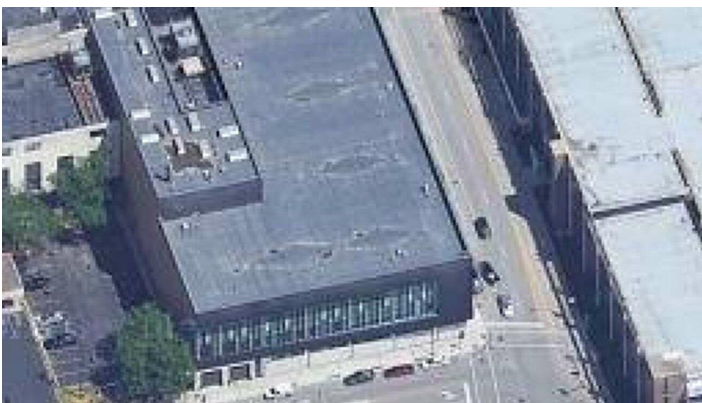
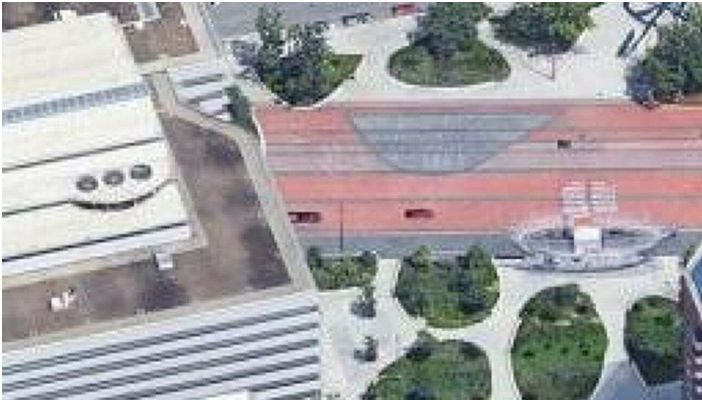
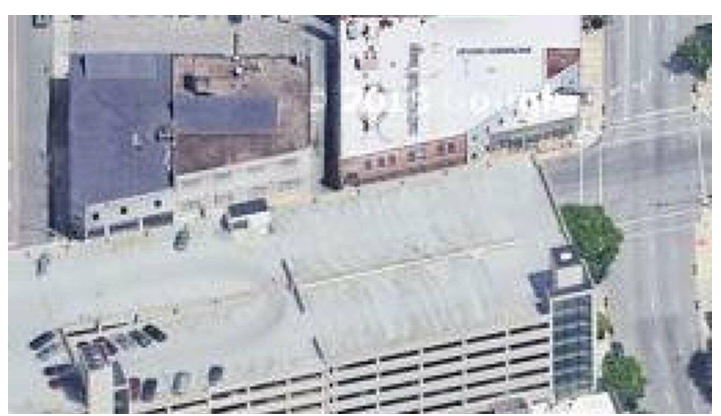
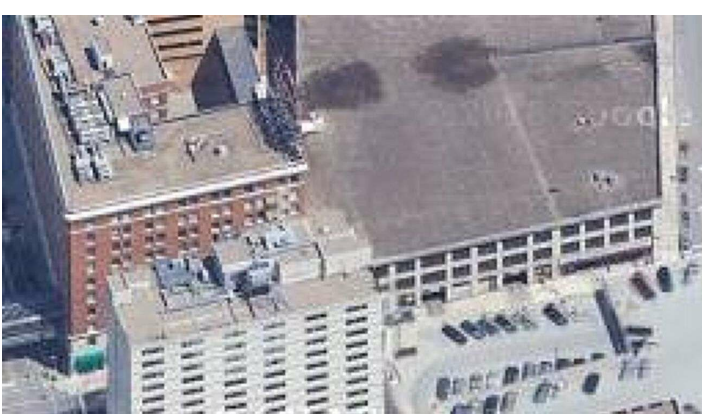
Source: ESRI®, 2024

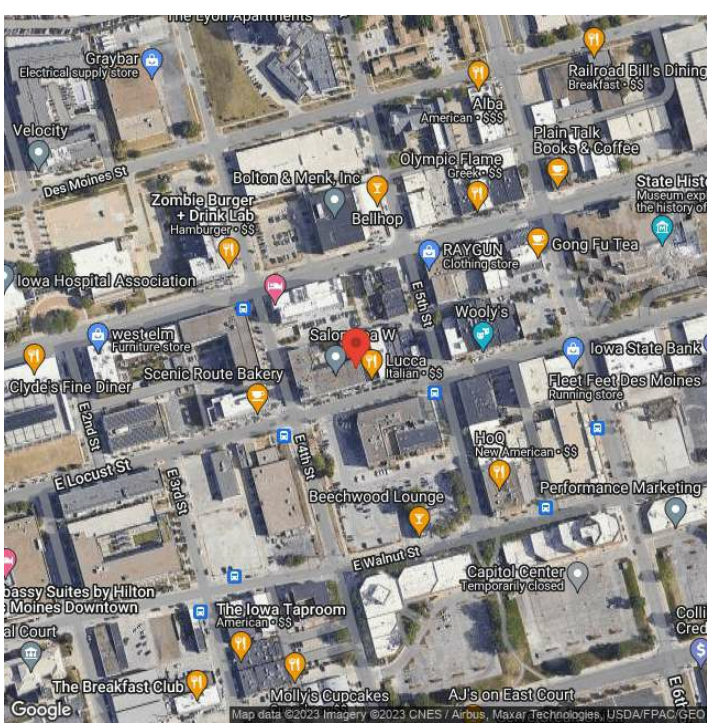
Transportation

Rail Served: No
Rail Accessible: No
Rail Infrastructure in Place: Unknown

Property Images







Sid Juwarker | Vice President of Economic Development | Greater Des Moines Partnership
700 Locust Street | Des Moines, IA 50309 | (515) 286-4964 | sjuwarker@DSMpartnership.com