

10320 Hickman Road  
10320 Hickman Rd | Clive, IA | US | Polk County  
Available SF: 58,816 | Lease Rate: \$9 | Sale Price: \$6,500,000



Building Type:	Industrial, Office
Available SF:	58,816
Total SF:	58,816
Sale Price:	\$6,500,000
Lease Rate:	\$9
Last Updated:	Sep 5, 2025

Economic Development Contact

Pete De Kock, Assistant City Manager  
City of Clive  
1900 NW 114th St,  
Clive, IA 50325  
(515) 223-6220 | pdekock@cityofclive.com

Doug Ollendike, Community Development Director  
Doug Ollendike, Community Development Director  
1900 NW 114th Street  
Clive, IA 50325  
(515) 223-6221 | dollendike@cityofclive.com

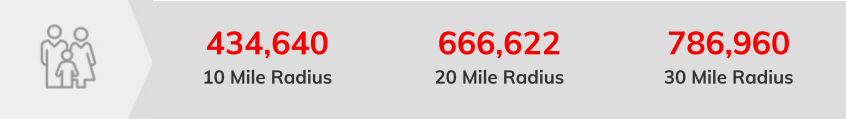
Realtor/Owner Contact

Harrison Kruse  
| harrison.kruse@cbre.com

Property and Area Description

- Easy access to I-35/80 - 27,200 VPD on Hickman Road - Highly visible from Hickman Road - Direct access to lighted intersection

Population



Source: ESRI®, 2024

Households



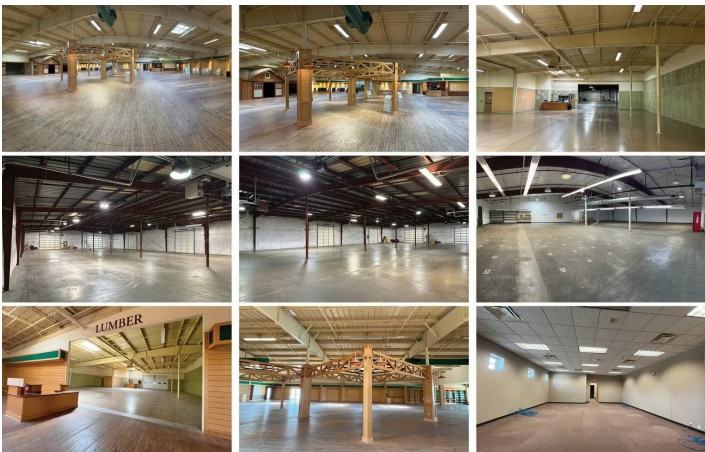
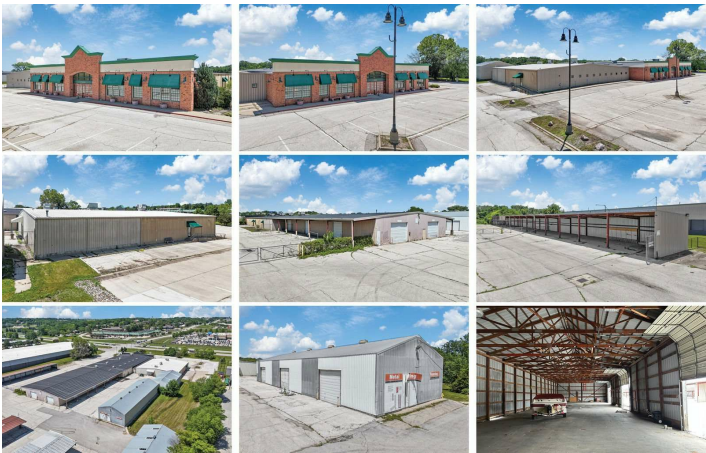
Source: ESRI®, 2024

Transportation

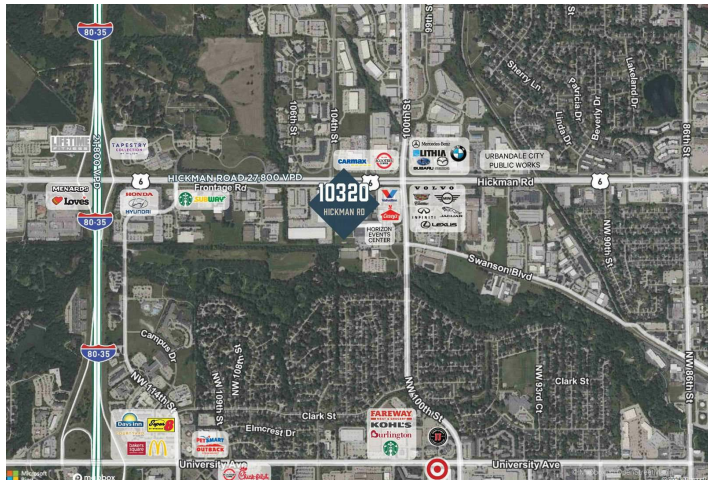
Rail Served: No  
Rail Accessible: No  
Rail Infrastructure in Place: Unknown



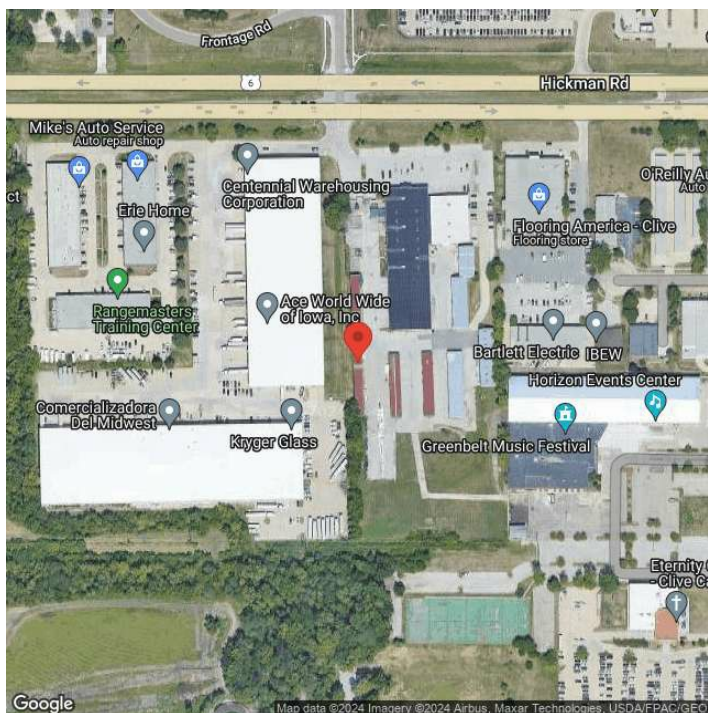
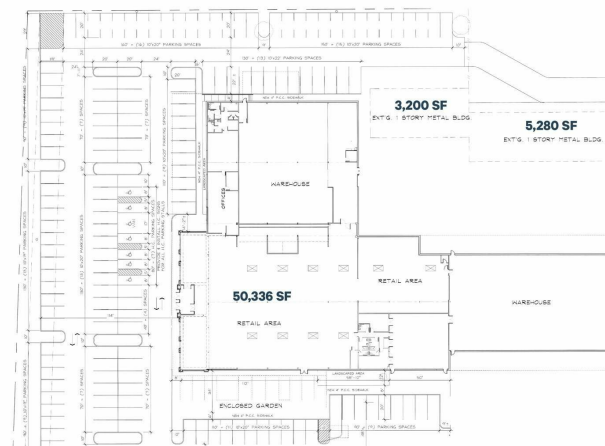
Property Images







## FLOOR PLAN



Sid Juwarker | Vice President of Economic Development | Greater Des Moines Partnership  
700 Locust Street | Des Moines, IA 50309 | (515) 286-4964 | [sjuwarker@DSMpartnership.com](mailto:sjuwarker@DSMpartnership.com)