

5029 NE 14th St, Des Moines  
5029 NE 14th St | Des Moines, IA | US | Polk County  
Available SF: 62,809 | Lease Rate: \$25



Building Type:	Retail
Available SF:	62,809
Total SF:	62,809
Lease Rate:	\$25
Last Updated:	Dec 12, 2025

Economic Development Contact

Tiffany Coleman  
Greater Des Moines Partnership  
700 Locust Street, Suite 100  
Des Moines, IA 50309  
(515) 286-4956 | tcoleman@dsmpartnership.com

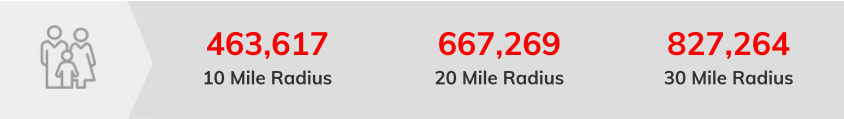
Realtor/Owner Contact

Mick Grossman  
| mickg@kwcommercial.com

Property and Area Description

Dont miss this leasing opportunity at 5029 NE 14th Street! This recently updated 7,448 square foot facility is perfectly positioned in a high-traffic location. There is plenty of space to grow your business across its 62,809 square foot lot. Dont miss out on this great opportunity to secure a prime piece of real estate in a highly desirable location. Contact me today to learn more and schedule a viewing of 5029 NE 14th Street, Des Moines, IA! View the listing PDF here.

Population



Source: ESRI®, 2025

Households

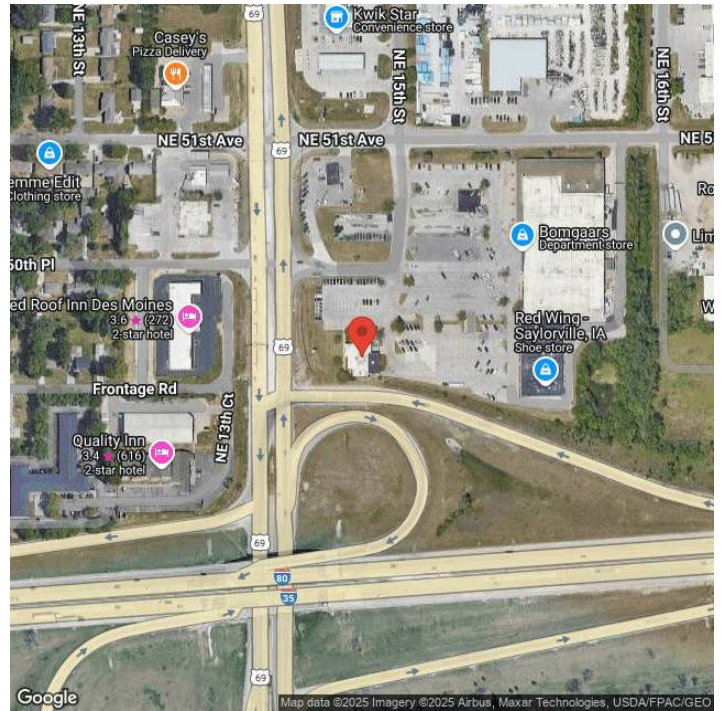


Source: ESRI®, 2025

Transportation

Rail Served: No  
Rail Accessible: No  
Rail Infrastructure in Place: Unknown

## Property Images



Tiffany Coleman | Economic Development Project Manager | Greater Des Moines Partnership  
700 Locust Street | Des Moines, IA 50309 | (515) 286-4956 | [tcoleman@DSMpartnership.com](mailto:tcoleman@DSMpartnership.com)