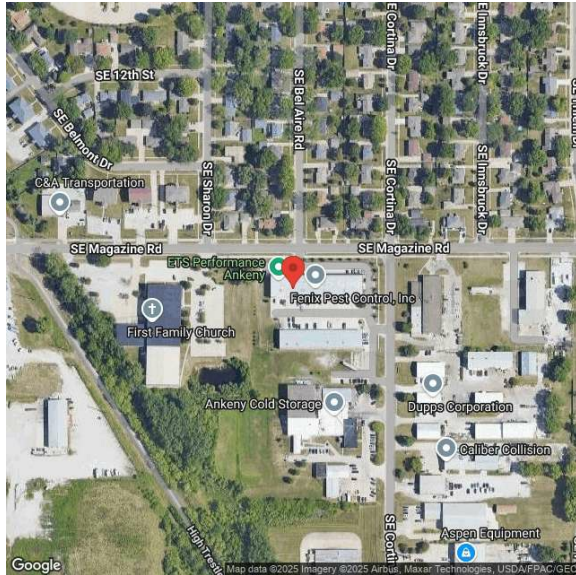


405 SE Magazine Rd, Suite Suite 102 | Ankeny, IA | US | Polk County
Available SF: 2,450 | Lease Rate: \$11.75



Building Type:	Industrial
Available SF:	2,450
Total SF:	9,975
Number of Stories:	1
Zoning:	M-1 Light Industrial
Year Built:	2016
Lease Rate:	\$11.75
Last Updated:	Jun 13, 2025

Fully Sprinkled 18' Clear Ceiling Heights Steel Frame Construction 12'x14'
Overhead Door M-1 Light Industrial Zoning

	10 Mile Radius	20 Mile Radius	30 Mile Radius
Population	345,702	653,029	833,351

Radius	Number of Properties
10 Mile Radius	139,341
20 Mile Radius	261,324
30 Mile Radius	330,896

Rail Served: Yes
Rail Served By: Union Pacific Railroad
Rail Accessible: Yes
Rail Infrastructure in Place: Unknown
Rail Contact: Darren Wisniski
Rail Contact Phone: 402-672-1983
Rail Contact Email: djwisnis@up.com

Derek Lord, Economic Development Dir.
City of Ankeny
410 W. First Street
Ankeny, IA 50021
(515) 965-6430 | dlord@ankenyiowa.gov

Lindsay Fox
City of Ankeny, Iowa
410 West First Street
Ankeny, Iowa 50023
(515) 965-6431 | lfox@ankenyiowa.gov

Darcy Gill
| dgill@dennyelwellcompany.com

LocationOne® Copyright 2001-2025 Global Location Technologies. This information has been secured from sources we believe to be reliable, but we make no representation or warranties, expressed or implied, as to the accuracy of the information.