

Large Retail/Office/Industrial Building
2505 Oliver St | Wichita, KS | US | Sedgwick County
Available SF: 28,600 | **Lease Rate:** \$10,000 | **Lease Terms:** Triple Net | **Sale Price:** \$1,100,000



Building Type:	Office, Industrial, Retail
Available SF:	28,600
Zoning:	Commercial
Site Size:	2.31 Acres
Year Built:	1990, 1999
Within City Limits:	Yes
Sale Price:	\$1,100,000
Sale Price Note:	38.46
Lease Rate:	\$10,000
Lease Terms:	Triple Net
Lease Rate Note:	\$4.20 per SF annually
Last Updated:	Jun 28, 2021

Economic Development Contact

Andrew Nave, CEcD
Greater Wichita Partnership
505 E. Douglas
Wichita, KS 67202
(316) 390-8950 |
andrew@greaterwichtapartnership.org

Realtor/Owner Contact

David M Leyh
Landmark Commercial Real Estate
(316) 262-2442 | dleyh@ccim.net

Property and Area Description

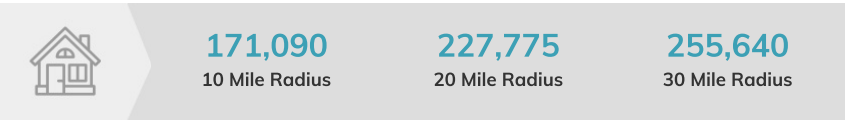
Located in Southeast Wichita, near McConnell Air Force Base. Comes with on-site parking. Residential neighborhoods to the north of Pawnee Street. Nearby businesses include: Subway, Dollar General, Kansas Department for Children & Families, Grace Auto, Select Motors, Blue Sky Self Storage, Sunflower Nutrition, and more.

Population



Source: ESRI®, 2024

Households

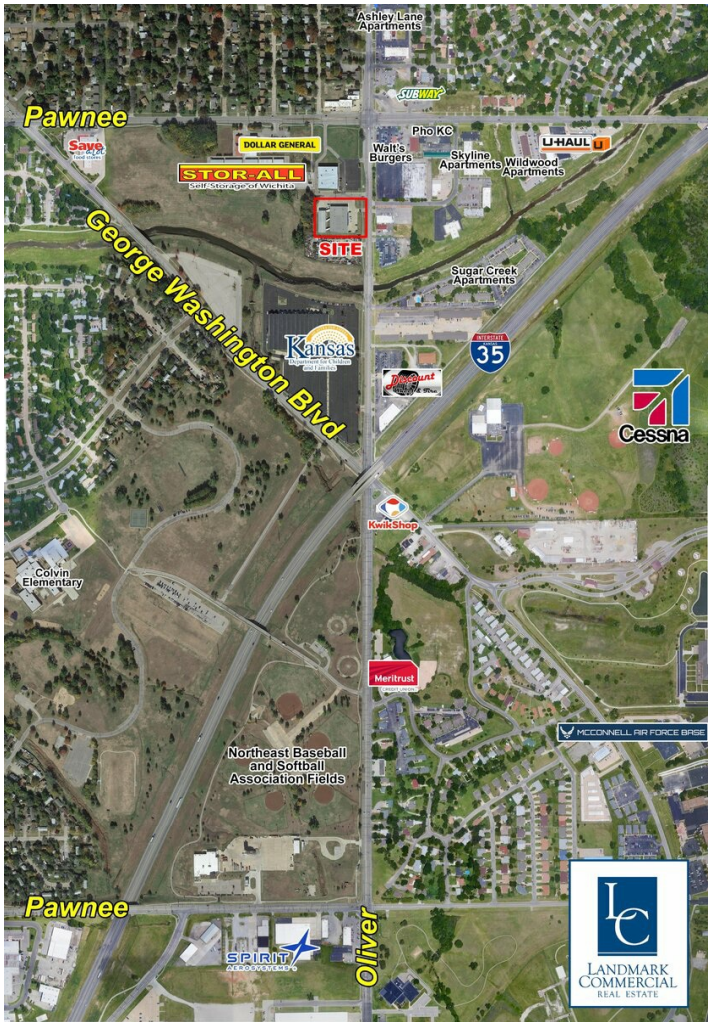


Source: ESRI®, 2024

Transportation

Rail Served: Unknown
Rail Served By: Unknown
Rail Accessible: Unknown
Rail Infrastructure in Place: Unknown

Property Images



Andrew Nave | Executive Vice President of Economic Development | Greater Wichita Partnership
| (316) 500-6650 | andrew@greaterwichitapartnership.org