

1547 S Topeka

1547 S Topeka St, Suite 1547 S Topeka | Wichita, KS | US | Sedgwick County
Available SF: 3,780 | Lease Rate: \$10.15



Building Type:	Industrial
Available SF:	3,780
Total SF:	3,780
Year Built:	2022
Lease Rate:	\$10.15
Last Updated:	Jul 4, 2025

Economic Development Contact

Andrew Nave, CEcD
Greater Wichita Partnership
505 E. Douglas Ave
Wichita, KS 67202
(316) 500-6650 |
andrew@greaterwichtapartnership.org

Realtor/Owner Contact

Ryan Hubbard
| rhubbard@naimartens.com

Property and Area Description

Warehouse building available for sale. Located south of downtown Wichita. Nearby access to Kellogg/US 54 and I-135 via Broadway or Harry. Well Insulated building, built in 2022, 4 grade level garage doors, fenced parking area. Located just south of downtown Wichita near the intersection of Harry & Topeka. Nearby access to Kellogg/US 54 and I-135 via Broadway or Harry.

Population



Source: ESRI®, 2024

Households



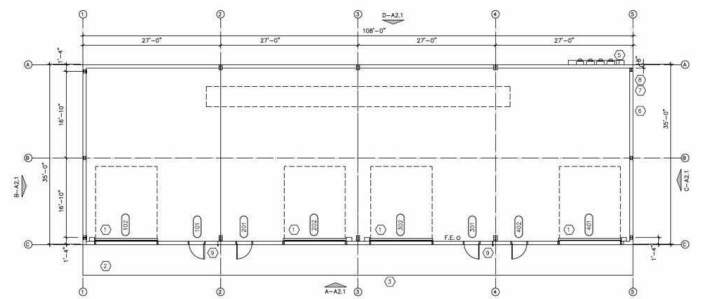
Source: ESRI®, 2024

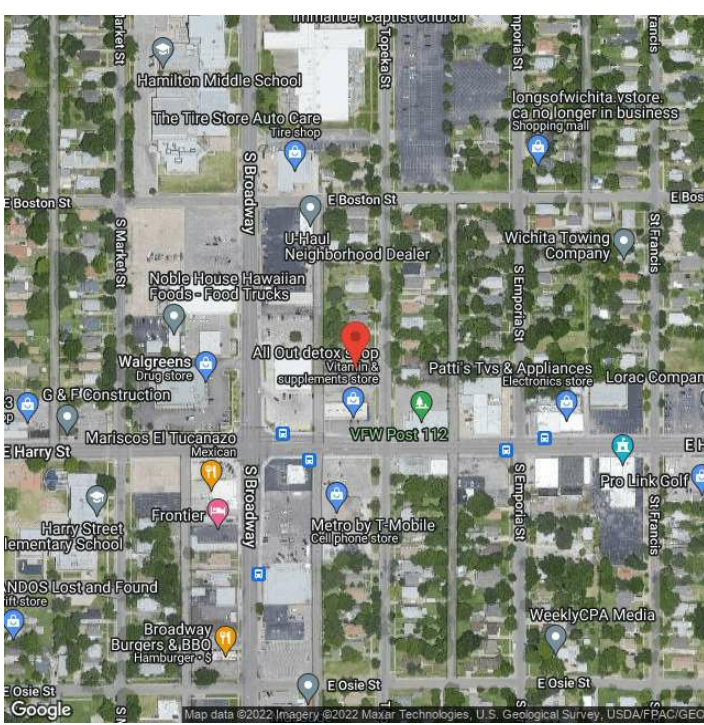
Transportation

Rail Served: Yes
Rail Served By: Union Pacific Railroad
Rail Accessible: Yes
Rail Infrastructure in Place: Unknown
Rail Contact: Kate M. Betsworth
Rail Contact Phone: 402-544-3237
Rail Contact Email: kmbetswo@up.com

Utilities

Electric: Evergy





Andrew Nave | Executive Vice President of Economic Development | Greater Wichita Partnership
| (316) 500-6650 | andrew@greaterwichtapartnership.org