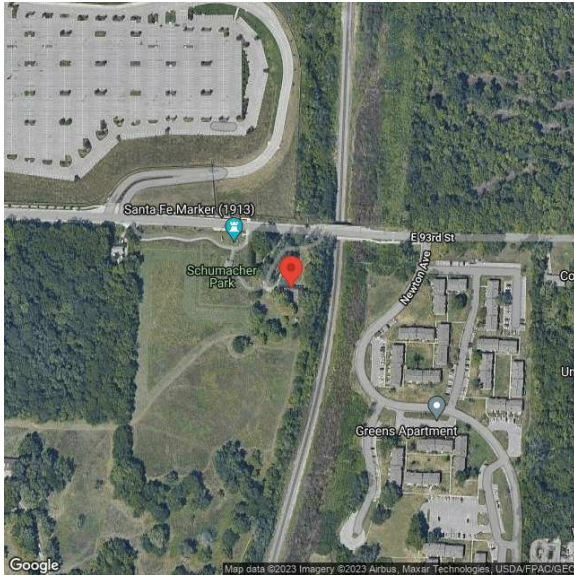


The Reserve

6601 E 93rd St | Kansas City, MO | US | Jackson County
Available SF: 314,554



Missouri Department of
Economic Development



Property and Area Description

GREa is pleased to announce the exclusive listing of 16 acres located along East 93rd Street in Kansas City, Missouri. The opportunity is conveniently located directly across the street from the newly established Cerner Innovation Campus near interstate 435 and Bannister road in the South Kansas City submarket. The fully entitled site presents an opportunity to develop a 293-unit market-rate multifamily community with institutional quality amenities and high-end unit nishes. The adjacent Cerner Innovation Campus is Kansas City's largest employment campus, with 7,000 employees currently on site, with plans to relocate Cerner's entire employment base (consisting of an additional 7,000 to 10,000 employees) over the next two years. The Innovations Campus includes restaurants, a fitness center, daycare, and other facilities. The site along East 93rd street is surrounded by evidence of growth, with new and upcoming multifamily and retail developments nearby such as Glade Park, Urbane, and Trails at Bannister, to name a few.

Population



672,916

10 Mile Radius

1,690,320

20 Mile Radius

2,037,567

30 Mile Radius

Source: ESRI®, 2024

Households



292,969

10 Mile Radius

691,580

20 Mile Radius

821,290

30 Mile Radius

Source: ESRI®, 2024

Transportation

Rail Served: No

Rail Accessible: No

Rail Infrastructure in Place: Unknown

Utilities

Electric: Every

Available SF:	314,554
Total SF:	314,554
Zoning:	MF-Residential
Last Updated:	Aug 9, 2024

Economic Development Contact

Tina Chace

Platte County Economic Development Council
11724 NW Plaza Circle, Suite 400
Kansas City, MO 64153
(816) 270-2119 | tchace@plattecountyedc.com

Steven Anthony

EDC of Kansas City, MO
300 Wyandotte St, Suite 400
Kansas City, MO 64105
(816) 691-2117 | santhony@edckc.com

Realtor/Owner Contact

Zac Thomas

| zthomas@grea.com

Property Images

