



Available SF:	800
Total SF:	800
Sale Price:	\$1,379,310
Last Updated:	Jan 22, 2025

Economic Development Contact

Mark W. Dawson, CEcD  
Greater Clinton Area Chamber of Commerce  
200 S. Main St.  
Clinton, Missouri 64735  
(660) 885-8166 | mark@clintonmo.com

Christy Maggi  
Christy Maggi  
105 E. Ohio St.  
Clinton, MO 64735  
(660) 885-6121 | cmaggi@cityofclintonmo.com

Realtor/Owner Contact

Jacob Abusharkh  
| jacob@thekasegroup.com

Property and Area Description

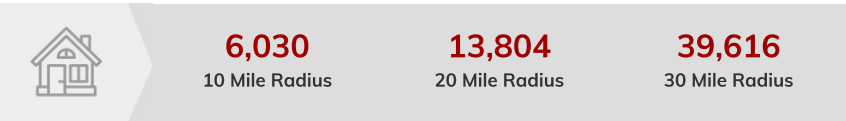
Clinton is a city in Henry County, Missouri, United States. The population was 9,008 at the 2010 census. It is the county seat of Henry County. The downtown square serves as a center for community commerce and public affairs (The square also serves as a parking lot.) It features a central courthouse and numerous shops, stores, and eating facilities. More than one dozen churches are found in the community, a few of which antedate 1900. Several important state highways intersect at Clinton, including Routes 13 & 7, making Clinton a popular stop on the Springfield-Kansas City Route. and a cluster of big-box stores, as well as several national-chain motels, are located in that area. Smaller motels are found on the outskirts of town on all sides.

Population



Source: ESRI®, 2024

Households



Source: ESRI®, 2024

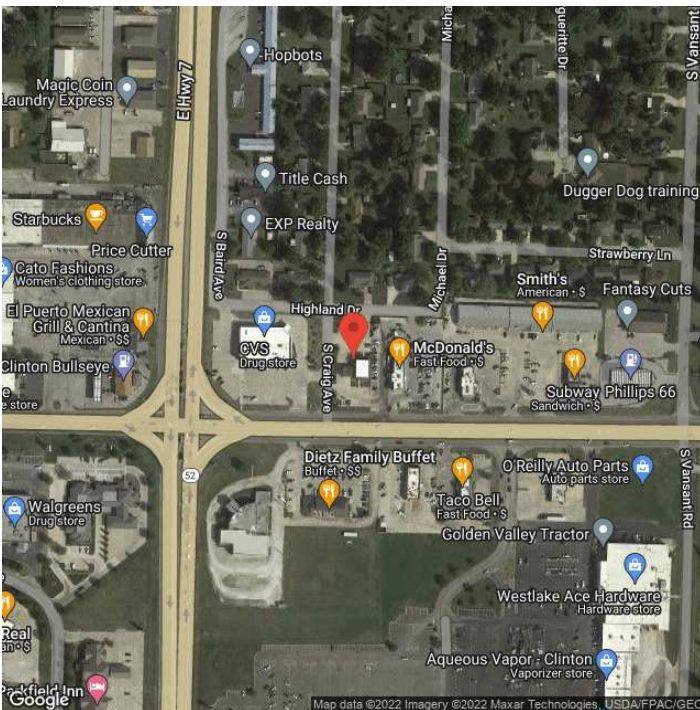
Transportation

Rail Served: No  
Rail Accessible: No  
Rail Infrastructure in Place: Unknown

Utilities

Electric: Everygy

## Property Images



Mark Dawson | Economic Development Director | Greater Clinton Chamber of Commerce  
200 South Main Street | Clinton, MO 64735 | (660) 492-6344 | mark@clintonmo.com