



Building Type:	Industrial
Available SF:	18,268
Total SF:	18,268
Ceiling Peak:	19 Ft.
Last Updated:	Apr 28, 2025

Economic Development Contact

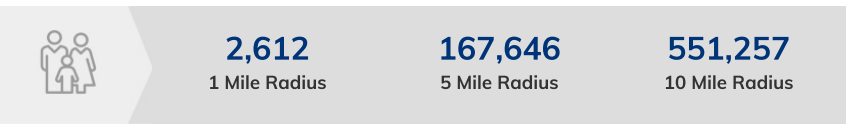
**Tina Chace**  
Platte County EDC  
11724 NW Plaza Circle Dr  
Kansas City, MO 64153  
(816) 270-2109 | [tchace@plattecountyedc.com](mailto:tchace@plattecountyedc.com)

**Mike Duffy**  
Mike Duffy  
Riverside, MO 64150  
(816) 372-9017 | [mduffy@cityofriversidemo.com](mailto:mduffy@cityofriversidemo.com)

Realtor/Owner Contact

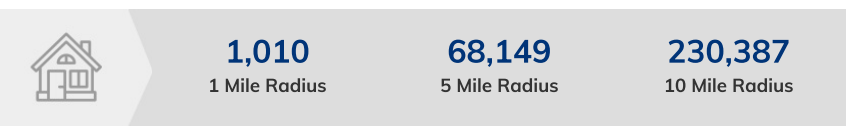
**Zach Hubbard**  
| [zhubbard@blockllc.com](mailto:zhubbard@blockllc.com)

Population



Source: ESRI®, 2024

Households



Source: ESRI®, 2024

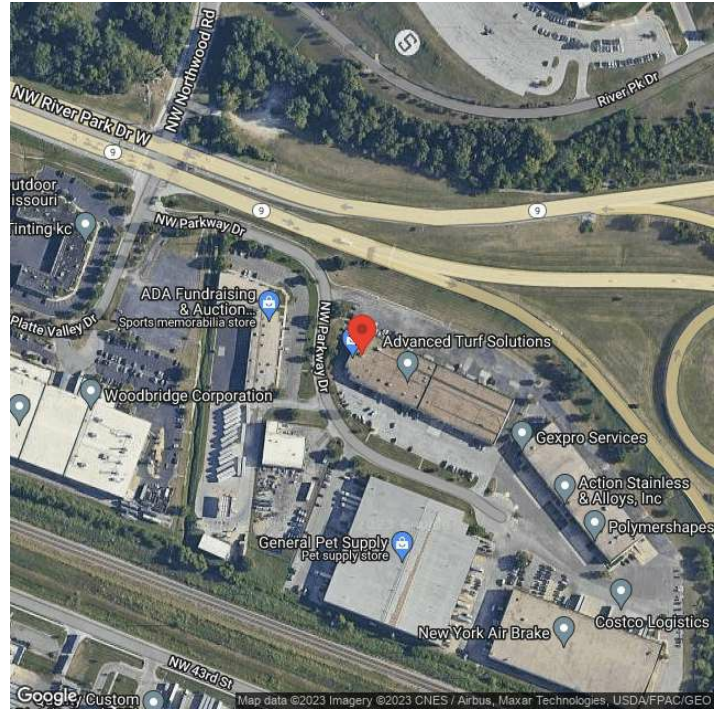
Transportation

Rail Served: No  
Rail Accessible: No  
Rail Infrastructure in Place: Unknown

Utilities

Electric: Evergy

## Property Images



Allison Schultz | Marketing & Public Relations Manager | Platte County Economic Development Council  
PO Box 14173 | Kansas City, MO 64152 | (816) 270-2109 | [aschultz@plattecountyedc.com](mailto:aschultz@plattecountyedc.com)