

Sublease Availability

200 NW Parkway Dr, Suite 224 | Riverside, MO | US | Platte County
Available SF: 17,673 | Lease Rate: \$6.47



Building Type:	Industrial
Available SF:	17,673
Total SF:	17,673
Ceiling Peak:	19 Ft.
Lease Rate:	\$6.47
Last Updated:	Jul 17, 2024

Economic Development Contact

Tina Chace
Platte County EDC
11724 NW Plaza Circle Dr
Kansas City, MO 64153
(816) 270-2109 | tchace@plattecountyedc.com

Mike Duffy
Mike Duffy
Riverside, MO 64150
(816) 372-9017 | mduffy@cityofriversidemo.com

Realtor/Owner Contact

Ben Boyd

Property and Area Description

Property Features Space Available: 18,268 SF Office/Assembly Area: 50% Loading: 5 dock-high doors Clear Height: 194 Sprinkler: Wet Lease Rate: \$6.47 PSF, Net Net Charges: Total: \$3.44 CAM: \$1.59 Amortization: \$0.25 Taxes: \$1.45 Insurance: \$0.15 Availability Date: January 1, 2024 Sublease Expiration: November 30, 2024

Population



Source: ESRI®, 2024

Households



Source: ESRI®, 2024

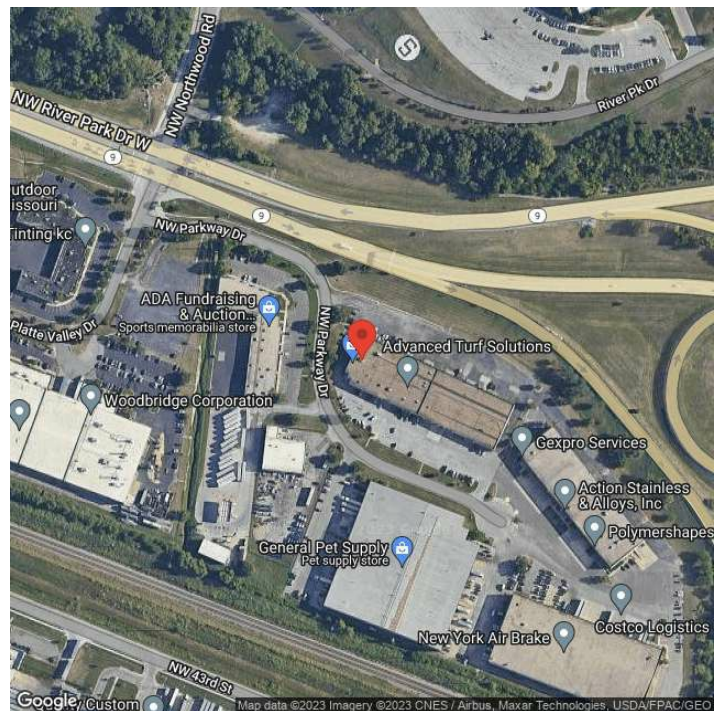
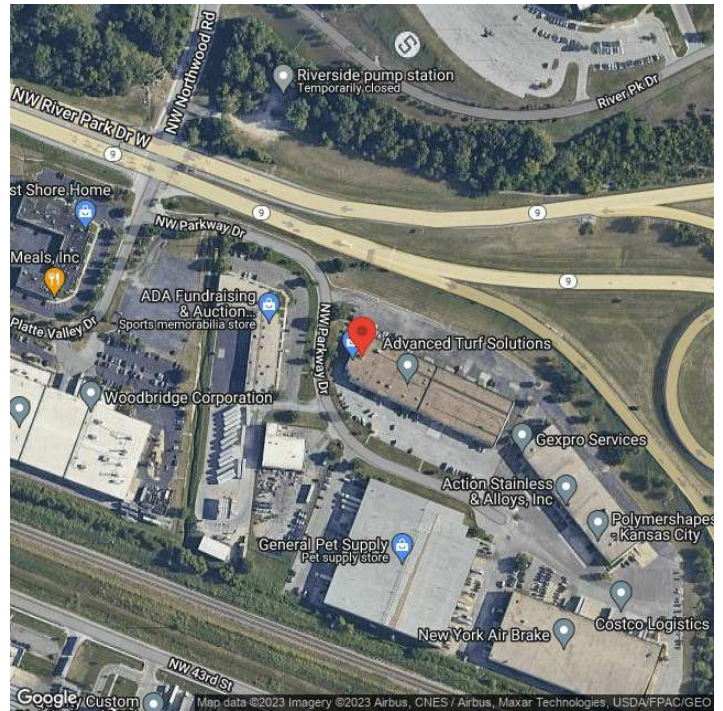
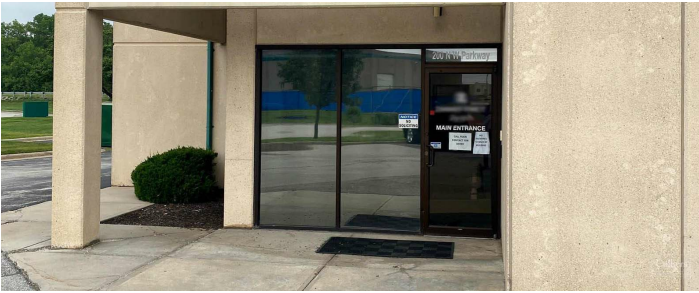
Transportation

Rail Served: No
Rail Accessible: No
Rail Infrastructure in Place: Unknown

Utilities

Electric: Everygy

Property Images



Allison Schultz | Marketing & Public Relations Manager | Platte County Economic Development Council
PO Box 14173 | Kansas City, MO 64152 | (816) 270-2109 | aschultz@plattecountyedc.com