



Building Type:	Office
Available SF:	8,912
Total SF:	8,912
Year Built:	1985
Lease Rate:	\$16.5
Last Updated:	Jun 11, 2025

Economic Development Contact

Tina Chace  
Platte County Economic Development Council  
11724 NW Plaza Circle, Suite 400  
Kansas City, MO 64153  
(816) 270-2119 | tchace@plattecountyedc.com

Steven Anthony  
EDC of Kansas City, MO  
300 Wyandotte St, Suite 400  
Kansas City, MO 64105  
(816) 691-2117 | santhony@edckc.com

Realtor/Owner Contact

Marty Gilchrist  
| marty.gilchrist@cushwake.com

Population



Source: ESRI®, 2024

Households



Source: ESRI®, 2024

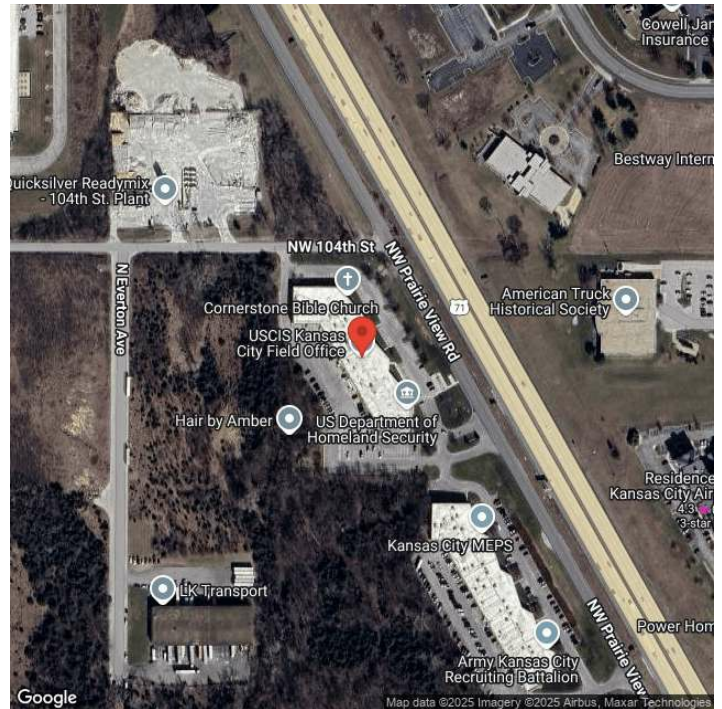
Transportation

Rail Served: No  
Rail Accessible: No  
Rail Infrastructure in Place: Unknown

Utilities

Electric: Evergy

## Property Images



Allison Schultz | Marketing & Public Relations Manager | Platte County Economic Development Council  
PO Box 14173 | Kansas City, MO 64152 | (816) 270-2109 | [aschultz@plattecountyedc.com](mailto:aschultz@plattecountyedc.com)