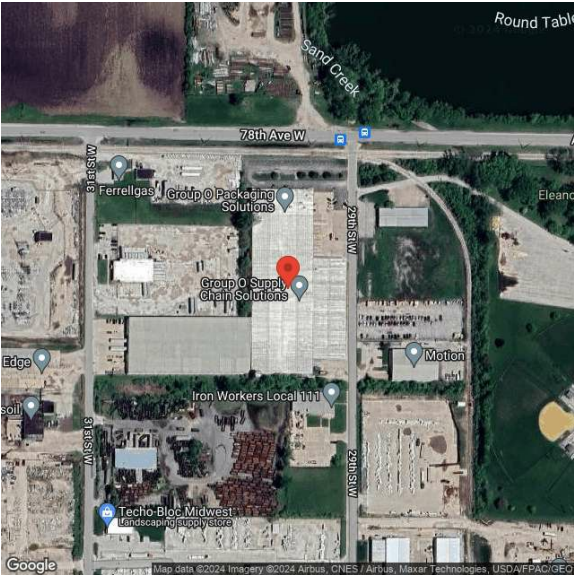


2916 78th Ave W  
2916 78th Ave W | Rock Island, IL | US | Rock Island County  
Available SF: 242,498



Building Type:	Industrial
Available SF:	242,498
Total SF:	242,498
Last Updated:	Sep 23, 2024

Economic Development Contact

Tarah Sipes  
City of Rock Island  
1528 3rd Avenue  
Rock Island, IL 61201  
(309) 732-2923 | sipes.tarah@rigov.org

Realtor/Owner Contact

Michael Minard  
| michael.minard@jill.com

Property and Area Description

Available for lease or sale in January 2025, this Rock Island, IL, industrial building is just 5 minutes from Interstate 280 and 20 minutes from Interstate 80. Zoned for light manufacturing and warehousing, building features include a two-story office space, three dock doors and 16 drive-in doors. It also offers 210 parking spaces.

Population

	<b>233,519</b> 10 Mile Radius	<b>340,478</b> 20 Mile Radius	<b>416,531</b> 30 Mile Radius
--	----------------------------------	----------------------------------	----------------------------------

Source: ESRI®, 2024

Households

	<b>99,905</b> 10 Mile Radius	<b>142,442</b> 20 Mile Radius	<b>173,508</b> 30 Mile Radius
--	---------------------------------	----------------------------------	----------------------------------

Source: ESRI®, 2024

Transportation

Rail Served: No  
Rail Accessible: No  
Rail Infrastructure in Place: Unknown

Property Images

