

5,120 SF on 1.45 AC Corner Lot off Interstate 70
2 NW 8th St | Concordia, MO | US | Lafayette County
Available SF: 5,120



Building Type:	Industrial
Available SF:	5,120
Total SF:	5,120
Last Updated:	Oct 18, 2024

Economic Development Contact

Dale Klussman, City Administrator
City of Concordia
618 South Main Street
Concordia, Missouri 64020
(660) 463-2228 | concordiaadmin@galaxycable.net

,
|

Realtor/Owner Contact

John Toben
| john.toben@srsre.com

Property and Area Description

Strategically positioned between the popular cities of Kansas City and Columbia, MO, this corner of opportunity sits on 1.45 acres. The 5,120 SF versatile metal building has 1,600 SF of office space, four (4) grade level doors, and has access to U.S. Interstate 70...talk about unlocking industrial possibilities. NWC of NW 8th Street and Highway 23 right off U.S. Interstate 70

Population



Source: ESRI®, 2024

Households



Source: ESRI®, 2024

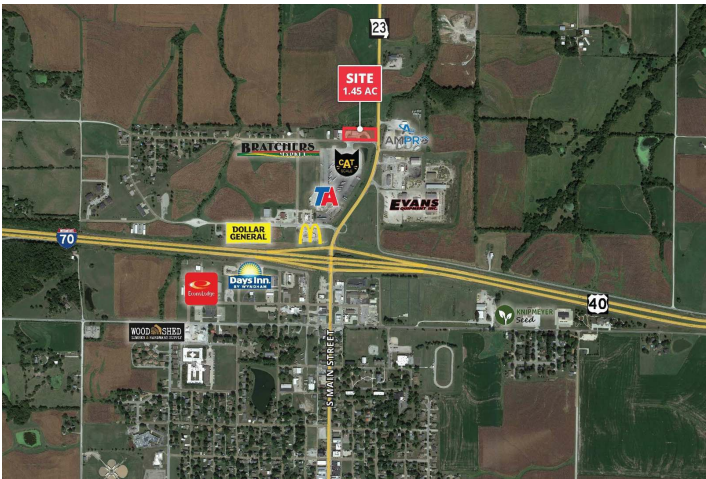
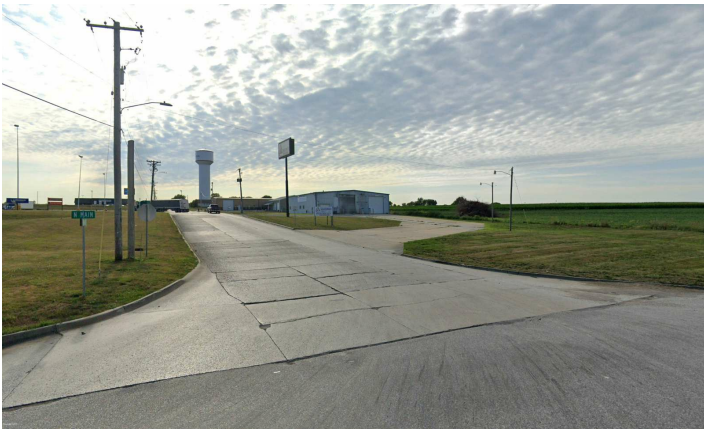
Transportation

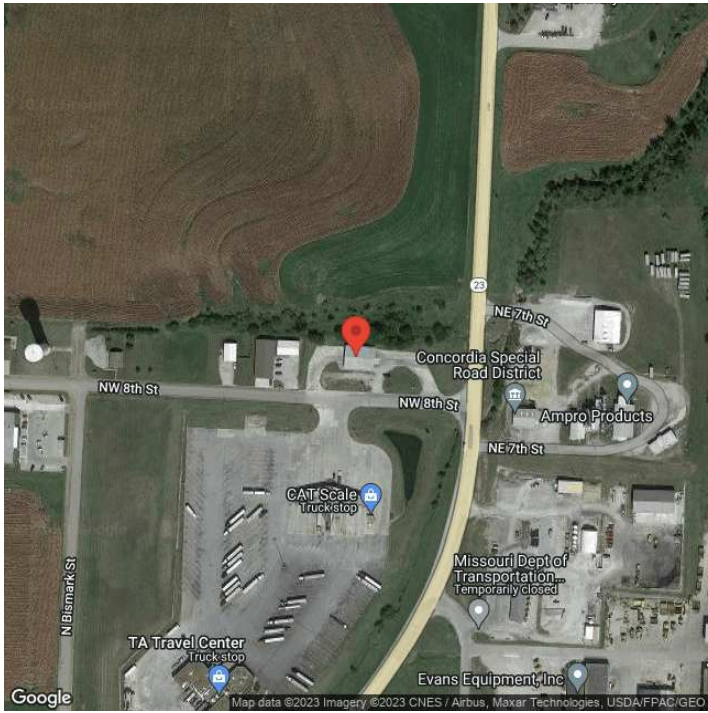
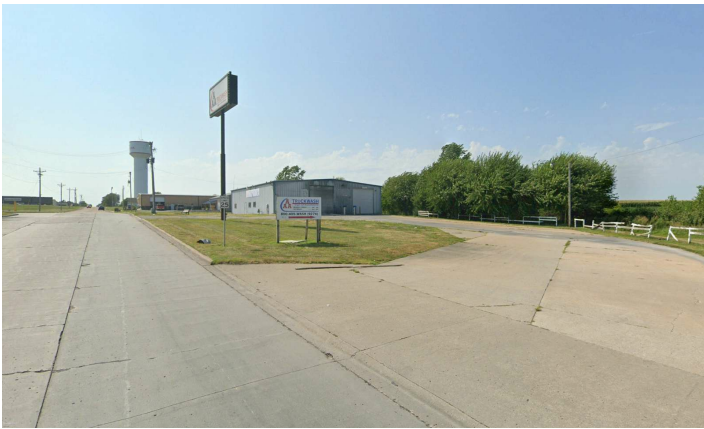
Rail Served: No
Rail Accessible: No
Rail Infrastructure in Place: Unknown

Utilities

Electric: Everygy

Property Images





Tracy E. Brantner CECD | President | Central Missouri Economic Development Alliance
300 N. Holden Street | Warrensburg, MO 64093 | (800) 431-0675 | info@choosecentralmo.com