

Family Dollar Tree

1003 Eagle Crest Dr | Holden, MO | US | Johnson County
Available SF: 10,500 | Sale Price: \$1,432,500



Building Type:	Retail
Available SF:	10,500
Total SF:	10,500
Sale Price:	\$1,432,500
Last Updated:	Jul 31, 2024

Economic Development Contact

Tracy Brantner
Johnson County Economic Development Corporation
300 North Holden, Suite 301
Warrensburg, Missouri 64093
(660) 747-0244 | growjocomo@earthlink.net

Ray Briscoe, Mayor
City of Holden
101 W. Third
Holden, Missouri 64093
(816) 732-4811 | mayor@cityofholden.com

Realtor/Owner Contact

Matthews Real Estate Investment Services
Scotty Latimer
| scotty.latimer@matthews.com

Property and Area Description

2024 Built-to-suit construction for Family Dollar Tree 10-Year NN+ lease w/ limited landlord responsibilities 5 Mile population of 4,136 residents The subject property comes with a 20-year transferable roof warranty Five, 5-Year Options all of which include rent increases of \$5,250 (\$.50 PSF) Extremely strong corporately guaranteed lease Located 50 Miles Southeast of Kansas City Subject property is surrounded by an affluent community which has an average household income of \$80,958

Population



Source: ESRI®, 2024

Households



Source: ESRI®, 2024

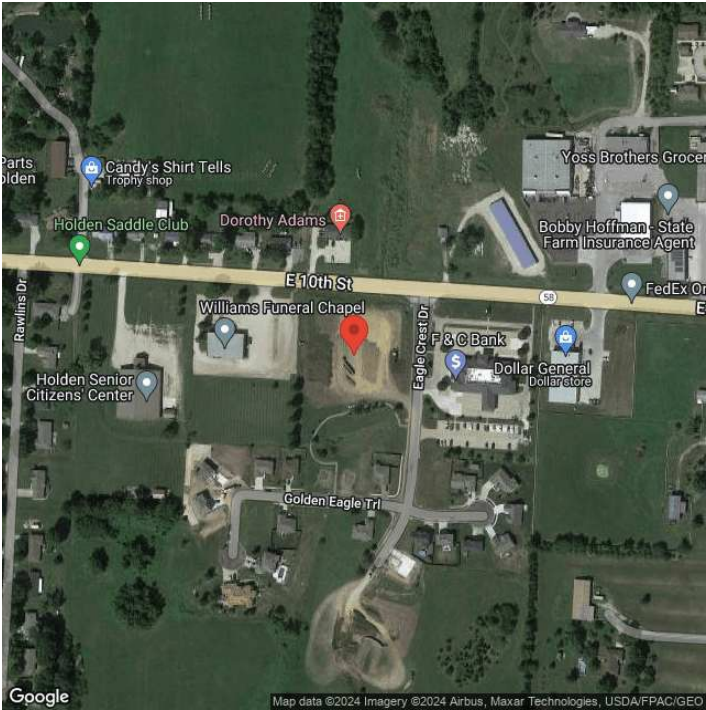
Transportation

Rail Served: No
Rail Served By: Union Pacific Railroad
Rail Accessible: No
Rail Infrastructure in Place: Unknown

Utilities

Electric: Evergy

Property Images



Tracy E. Brantner CEcd | President | Central Missouri Economic Development Alliance
300 N. Holden Street | Warrensburg, MO 64093 | (800) 431-0675 | info@choosecentralmo.com