

301 S 59th Lane
301 S 59th Ln, Suite 301 S 59th Lane | Kansas City, KS | US | Wyandotte
County
Available SF: 5,000 | Lease Rate: \$12



Building Type:	Industrial
Available SF:	5,000
Total SF:	5,000
Year Built:	2021
Lease Rate:	\$12
Last Updated:	Dec 13, 2024

Economic Development Contact

Greg Kindle
Wyandotte Economic Development Council
727 Minnesota Avenue
Kansas City, KS 66117
(913) 371-3198 | gkindle@wyedc.org


Realtor/Owner Contact

Logan Rose
| lrose@nai-heartland.com

Property and Area Description


5,000 SF Drive-in service building with 4 drive-in bays. LED lighting. Located in secured fenced/gated lot. Outdoor storage available - call for pricing.

Population

	34,362 3 Mile Radius	142,778 5 Mile Radius	609,771 10 Mile Radius
---	-------------------------	--------------------------	---------------------------

Source: ESRI®, 2024

Households

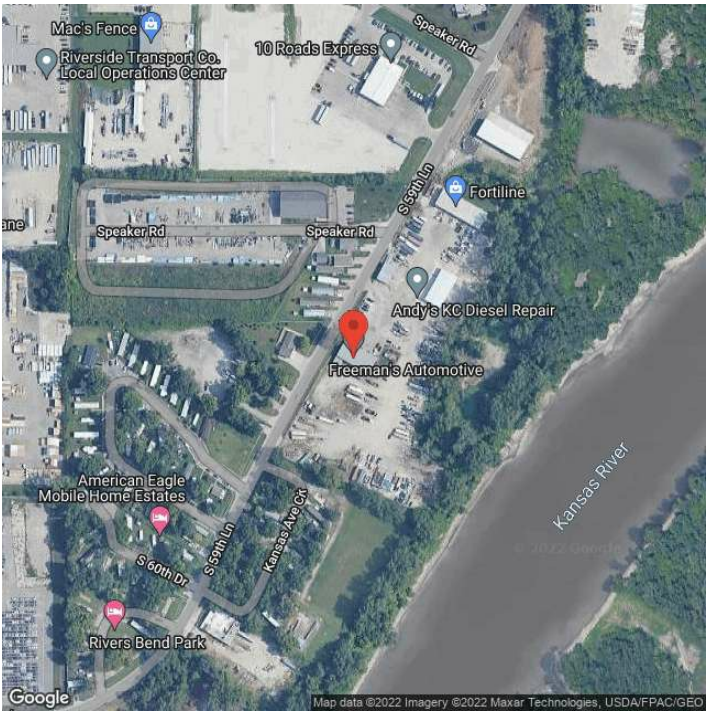
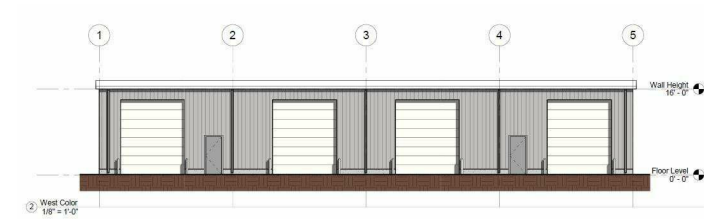
	12,680 3 Mile Radius	52,846 5 Mile Radius	261,599 10 Mile Radius
---	-------------------------	-------------------------	---------------------------

Source: ESRI®, 2024

Transportation

Rail Served: Yes
Rail Served By: Union Pacific Railroad
Rail Accessible: Yes
Rail Infrastructure in Place: Unknown
Rail Contact: Kate M. Betsworth
Rail Contact Phone: 402-544-3237
Rail Contact Email: kmbetswo@up.com

Property Images



Greg Kindle | President | Wyandotte Economic Development Council
727 Minnesota | Kansas City, KS 66117 | (913) 371-3198 | gkindle@wyedc.org