

Building Type:	Retail
Available SF:	24,235
Total SF:	24,235
Year Built:	1923
Last Updated:	Aug 9, 2024

Economic Development Contact

Greg Kindle
Wyandotte Economic Development Council
727 Minnesota Avenue
Kansas City, KS 66117
(913) 371-3198 | gkindle@wyedc.org

Realtor/Owner Contact

Matt Watkins
| matt@reececommercial.com

Property and Area Description

Description The Historic Katz Drug Store building was recently renovated with a coffee shop and collaborative space. The 2nd and 3rd floors are open and ready for build-out of a new tenant. 1st Floor 2,355 SF, 2nd Floor 5,703 SF, 3rd Floor 5,592 SF Highlights Downtown KCK Office/Retail Space Ownership is Local Minnesota Ave Updates Complete Active Area for Urban Office Number of Floors: 3 Under Construction: No Building Class: A RSF: 24,000 USF: Not specified Acres: 0.33

Population

	69,061 3 Mile Radius	181,412 5 Mile Radius	681,536 10 Mile Radius
--	--------------------------------	---------------------------------	----------------------------------

Source: ESRI®, 2024

Households

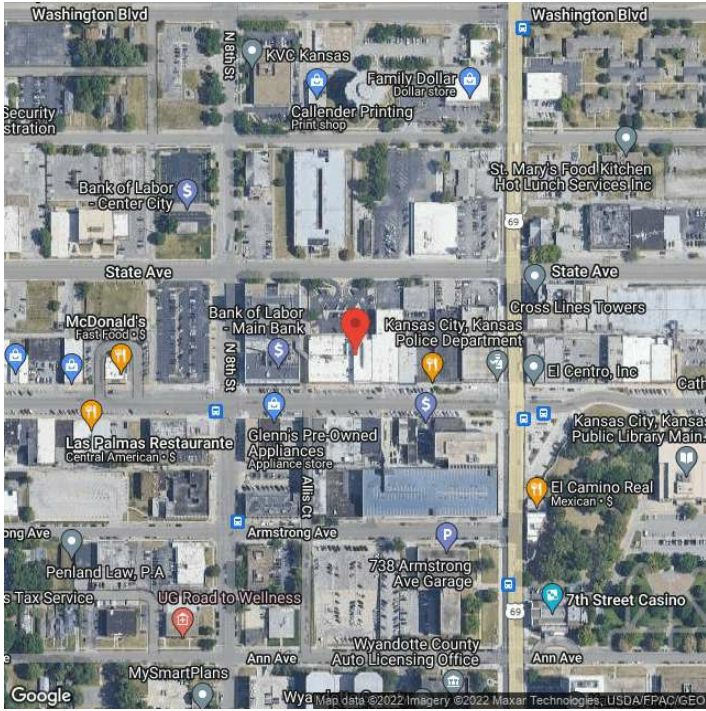
	29,051 3 Mile Radius	79,877 5 Mile Radius	291,727 10 Mile Radius
--	--------------------------------	--------------------------------	----------------------------------

Source: ESRI®, 2024

Transportation

Rail Served: No
Rail Accessible: No
Rail Infrastructure in Place: Unknown

Property Images



Greg Kindle | President | Wyandotte Economic Development Council
727 Minnesota | Kansas City, KS 66117 | (913) 371-3198 | gkindle@wyedc.org