



Building Type:	Industrial
Available SF:	12,119
Total SF:	12,119
Ceiling Peak:	20 Ft.
Last Updated:	Apr 25, 2025

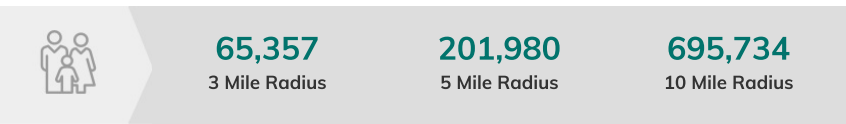
Economic Development Contact

Greg Kindle
Wyandotte Economic Development Council
727 Minnesota Avenue
Kansas City, KS 66117
(913) 371-3198 | gkindle@wyedc.org

Realtor/Owner Contact

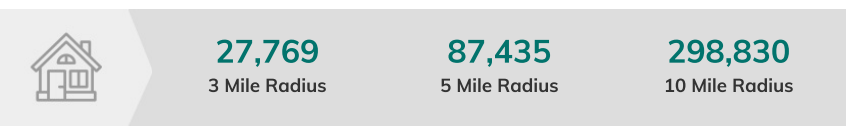
Zach Hubbard
| zhubbard@blockllc.com

Population



Source: ESRI®, 2024

Households

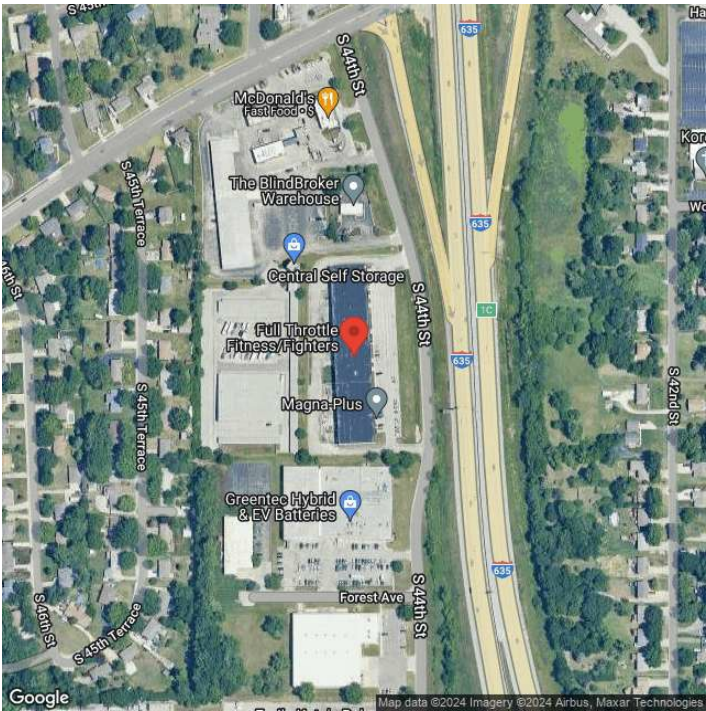


Source: ESRI®, 2024

Transportation

Rail Served: No
Rail Accessible: No
Rail Infrastructure in Place: Unknown

Property Images



Greg Kindle | President | Wyandotte Economic Development Council
727 Minnesota | Kansas City, KS 66117 | (913) 371-3198 | gkindle@wyedc.org