

804 Central Ave
804 Central Ave, Suite Warehouse Space | Kansas City, KS | US | Wyandotte
County
Available SF: 7,000



Building Type:	Industrial, Office
Available SF:	7,000
Total SF:	7,000
Zoning:	C-3
Year Built:	1930
Last Updated:	Jun 30, 2025

Economic Development Contact

Greg Kindle
Wyandotte Economic Development Council
727 Minnesota Avenue
Kansas City, KS 66117
(913) 371-3198 | gkindle@wyedc.org

Realtor/Owner Contact

Andrew Danner
| andrew@windfieldrealestate.com

Property and Area Description

This 7,000 SF (+/-) building offers a versatile warehouse space ideal for many businesses. Situated on a generous lot with additional space behind the building, it provides ample room for expansion or outdoor operations. The building has a drive-in door with a new ramp for easy access and loading. A mezzanine above the production floor, offering extra storage or office space and a 2 x 200 amp electrical panels to accommodate high-demand operations. 7,000 SF +/- building available for lease along Central Avenue in Kansas City, KS.

Population

	77,341 3 Mile Radius	206,491 5 Mile Radius	699,302 10 Mile Radius
--	-------------------------	--------------------------	---------------------------

Source: ESRI®, 2024

Households

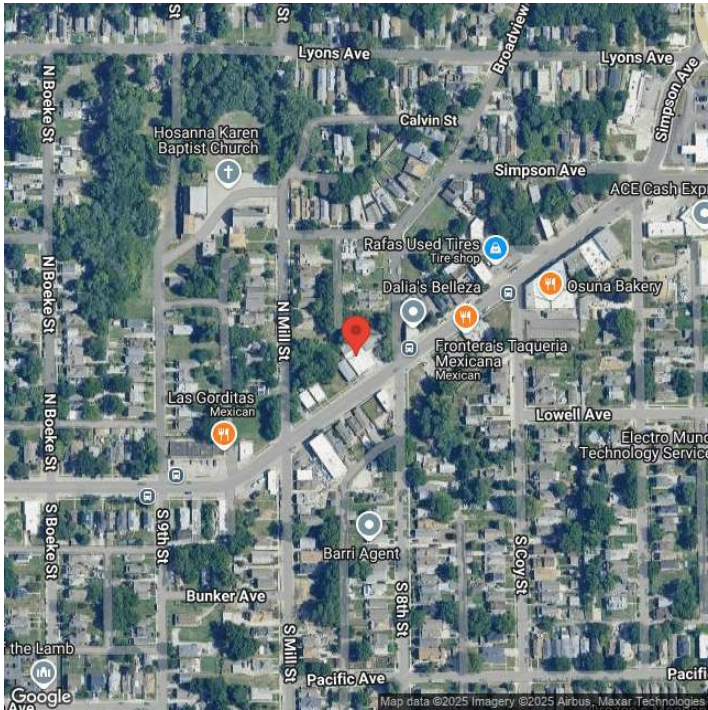
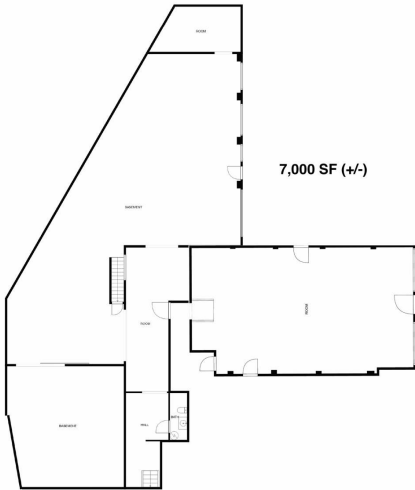
	32,396 3 Mile Radius	93,614 5 Mile Radius	301,050 10 Mile Radius
--	-------------------------	-------------------------	---------------------------

Source: ESRI®, 2024

Transportation

Rail Served: Yes
Rail Served By: Union Pacific Railroad
Rail Accessible: Yes
Rail Infrastructure in Place: Unknown
Rail Contact: Kate M. Betsworth
Rail Contact Phone: 402-544-3237
Rail Contact Email: kmbetswo@up.com

Property Images



Greg Kindle | President | Wyandotte Economic Development Council
727 Minnesota | Kansas City, KS 66117 | (913) 371-3198 | gkindle@wyedc.org