

2501 1st Avenue E.
2501 1st Ave E | Newton, IA | US | Jasper County
Available SF: 10,096 | Sale Price: \$375,000



Building Type:	Retail
Available SF:	10,096
Total SF:	10,096
Year Built:	1959
Sale Price:	\$375,000
Last Updated:	Aug 26, 2024

Economic Development Contact

Frank Liebl - Executive Director
Newton Development Corporation
403 W 4th St N, Suite 210
Newton, Iowa 50208
(641) 787-8209 | frankliebl.ndc@gmail.com

Tanya Michener - Associate Director
Newton Development Corporation
403 W 4th St N, Suite 210
Newton, Iowa 50208
(641) 787-8210 | tanyam.ndc@gmail.com

Realtor/Owner Contact

Keith Olson
| kolson@locatecre.com

Property and Area Description

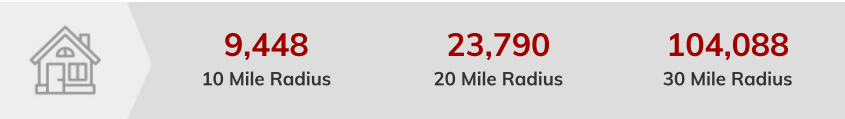
A value-add retail/office center located in Newton, IA, ideal for an investor or owner occupier. The center has a few vacant suites available in a variety of versatile sizes making it a fantastic investment opportunity with strong upside potential. Positioned along 1st Avenue E (Highway 6), Newtons east-west commercial corridor. Nearby businesses include Earl May Garden Center, Farver True Value, Theisens, La Cabana and TruBank. Positioned along 1st Avenue E (Highway 6), Newtons east-west commercial corridor.

Population



Source: ESRI®, 2024

Households

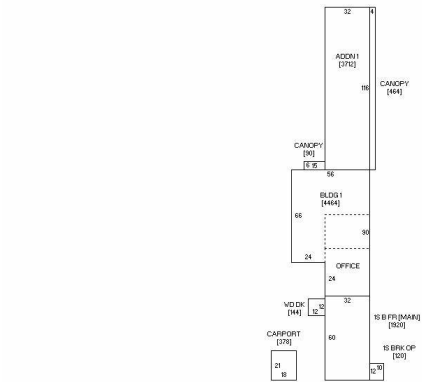


Source: ESRI®, 2024

Transportation

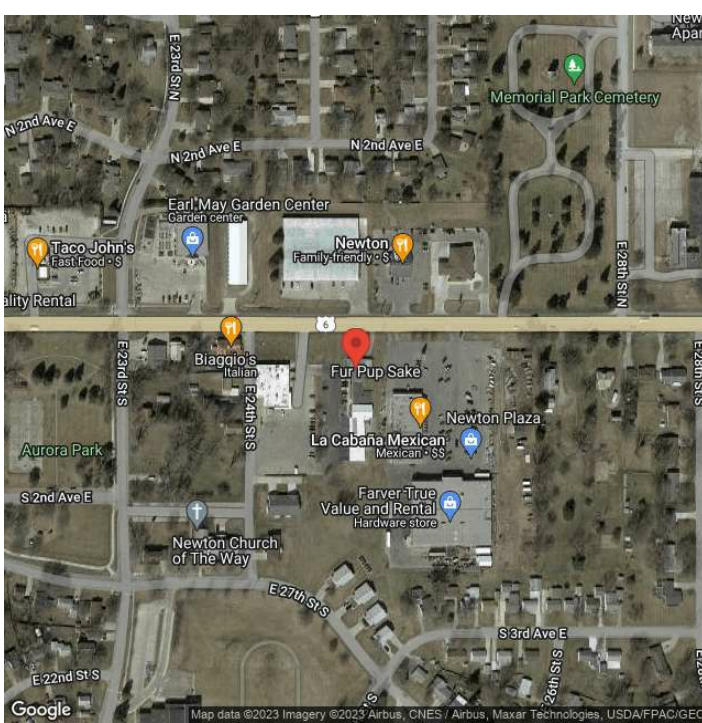
Rail Served: Yes
Rail Served By: Union Pacific Railroad
Rail Accessible: Yes
Rail Infrastructure in Place: Unknown
Rail Contact: Darren Wisniski
Rail Contact Phone: 402-672-1983
Rail Contact Email: djwisnis@up.com

Property Images



Sketch by www.cartavision.com





Jeff Davidson | Jasper County Economic Development Corporation (JEDCO)
315 W 3rd St N. | Newton, IA 50208 | (641) 417-9500 | JEDCOIowa@gmail.com