

2825 E 13th St | Ames, IA  
2825 E 13th St | Ames, IA | US | Story County  
Available SF: 2,907 | Lease Rate: \$9.95



Building Type:	Office
Available SF:	2,907
Total SF:	2,907
Year Built:	1980
Lease Rate:	\$9.95
Last Updated:	Aug 26, 2024

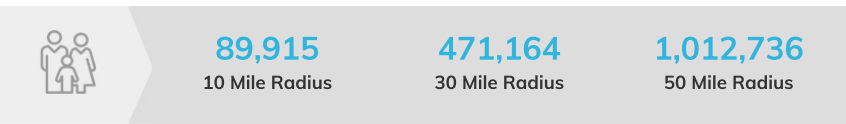
Economic Development Contact

Dan Culhane, CEcD, CCE  
Ames Regional Economic Alliance  
304 Main Street  
Ames, IA 50010  
(515) 232-2310 | dan@amesalliance.com

Realtor/Owner Contact

Alec Wilcox  
| awilcox@iowaca.com

Population



Source: ESRI®, 2024

Households

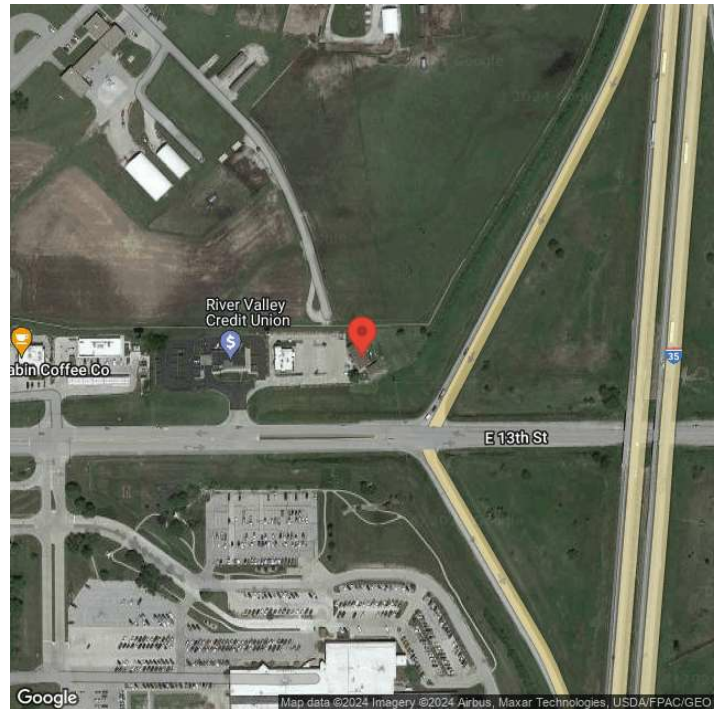


Source: ESRI®, 2024

Transportation

Rail Served: Yes  
Rail Served By: Union Pacific Railroad  
Rail Accessible: Yes  
Rail Infrastructure in Place: Unknown  
Rail Contact: Darren Wisniski  
Rail Contact Phone: 402-672-1983  
Rail Contact Email: djwisnis@up.com

## Property Images



**Dan Culhane | President & CEO | Ames Regional Economic Alliance**  
**304 Main Street | Ames, IA 50010 | (515) 232-2310 | [dan@amesalliance.com](mailto:dan@amesalliance.com)**