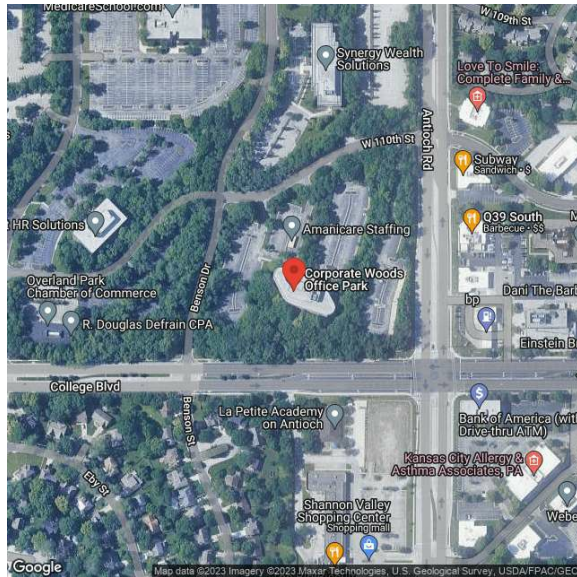


14 Corporate Woods

8717 W 110th St, Suite 100 | Overland Park, KS | US | Johnson County

Available SF: 7,886 | Lease Rate: \$22



Property and Area Description


-Iconic Kansas City office name & location -Immediate access to all major highways -Flexible leasing & customizable spaces -Furnished conference facilities -24/7 on-site security and management -Google Fiber available In all buildings Wifi Hotspots available throughout Park -Wooded setting w/ trails, streams & wildlife -Abundant green space for recreational and team-building activities -PGA regulation size putting green and year-round public events -Convenient parking for staff and clients -Electric Vehicle charging - Conveniently located food trucks & cafs Across from Q39 BBQ

Population

	726,550 10 Mile Radius	1,555,739 20 Mile Radius	2,080,666 30 Mile Radius
-----------------------------------------------------------------------------------	----------------------------------	------------------------------------	------------------------------------

Source: ESRI®, 2024

Households

	303,555 10 Mile Radius	637,311 20 Mile Radius	839,434 30 Mile Radius
-----------------------------------------------------------------------------------	----------------------------------	----------------------------------	----------------------------------

Source: ESRI®, 2024

Building Type:	Office
Available SF:	7,886
Total SF:	7,886
Lease Rate:	\$22
Last Updated:	Jul 21, 2025

Economic Development Contact

Natalie Vesta

Overland Park Chamber

9001 W. 110th St., Ste. 150

Overland Park, KS 66210

(913) 766-7605 | nvesta@opchamber.org

Realtor/Owner Contact

Brent Roberts

| broberts@lee-associates.com

Transportation

Rail Served: No

Rail Accessible: No

Rail Infrastructure in Place: Unknown

Utilities

Electric: Everygy

Natalie Vesta | Economic Development Project Coordinator | Overland Park Chamber of Commerce
9001 W 110th St, Ste. 150 | Overland Park, KS 66210 | (913) 766-7605 | nvesta@opchamber.org