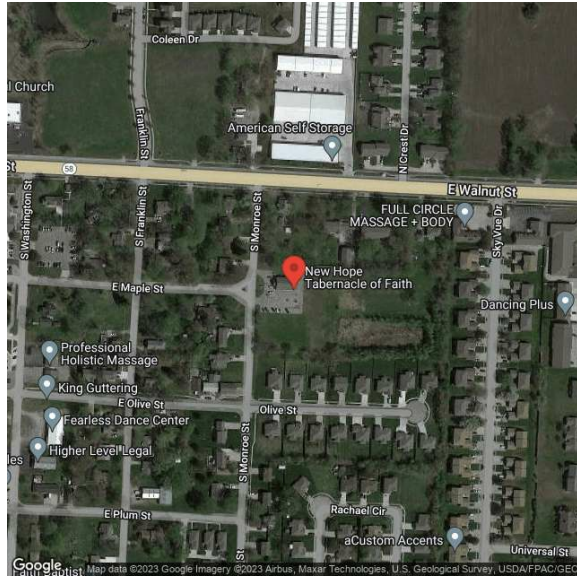


New Hope Tabernacle of Faith Church
 105 S Monroe St | Raymore, MO | US | Cass County
 Available SF: 191,664 | Sale Price: \$525,000



Property and Area Description

Potential redevelopment opportunity; Easy access to 49 Hwy; Close proximity to retail and residential; Currently zoned R-1; "Potential redevelopment opportunity; Easy access to 49 Hwy; Close proximity to retail and residential; Currently zoned R-1;"

Population



Source: ESRI®, 2024

Households



Source: ESRI®, 2024

Building Type:	Other
Available SF:	191,664
Total SF:	191,664
Sale Price:	\$525,000
Last Updated:	Jun 6, 2025

Transportation

Rail Served: No
Rail Accessible: No
Rail Infrastructure in Place: Unknown

Utilities

Electric: Every

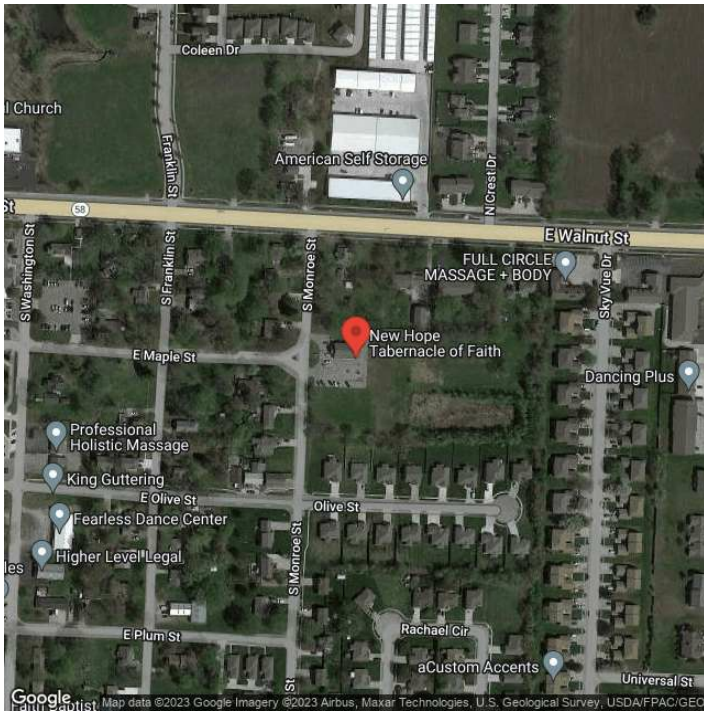
Economic Development Contact

Jordan Lea
 City of Raymore, MO
 100 Municipal Circle
 Raymore, MO 64083
 (816) 892-3030 | jlea@raymore.com

Realtor/Owner Contact

Nick Miller
 | newmarkdemo1@buildout.com

Property Images



Subash Alias | CEO | Missouri Partnership
120 S. Central Ave, Suite 1535 | Saint Louis, MO 63105 | (877) 725-0949 | Subash@MissouriPartnership.com