

1127 W 8th St

1127 W 8th St | Kansas City, MO | US | Jackson County
Available SF: 111,075 | Sale Price: \$4,440,000



Building Type:	Industrial
Available SF:	111,075
Total SF:	111,075
Year Built:	1925
Sale Price:	\$4,440,000
Last Updated:	May 28, 2025

Economic Development Contact

Tina Chace

Platte County Economic Development Council
11724 NW Plaza Circle, Suite 400
Kansas City, MO 64153
(816) 270-2119 | tchace@plattecountyedc.com

Steven Anthony

EDC of Kansas City, MO
300 Wyandotte St, Suite 400
Kansas City, MO 64105
(816) 691-2117 | santhony@edckc.com

Realtor/Owner Contact

Gib Kerr

| gib.kerr@cushwake.com

Population



1,721,999

20 Mile Radius

2,087,451

30 Mile Radius

2,677,281

60 Mile Radius

Source: ESRI®, 2024

Households



700,680

20 Mile Radius

833,462

30 Mile Radius

1,068,215

60 Mile Radius

Source: ESRI®, 2024

Transportation

Rail Served: Yes

Rail Served By: Union Pacific Railroad

Rail Accessible: Yes

Rail Infrastructure in Place: Unknown

Rail Contact: Kate M. Betsworth

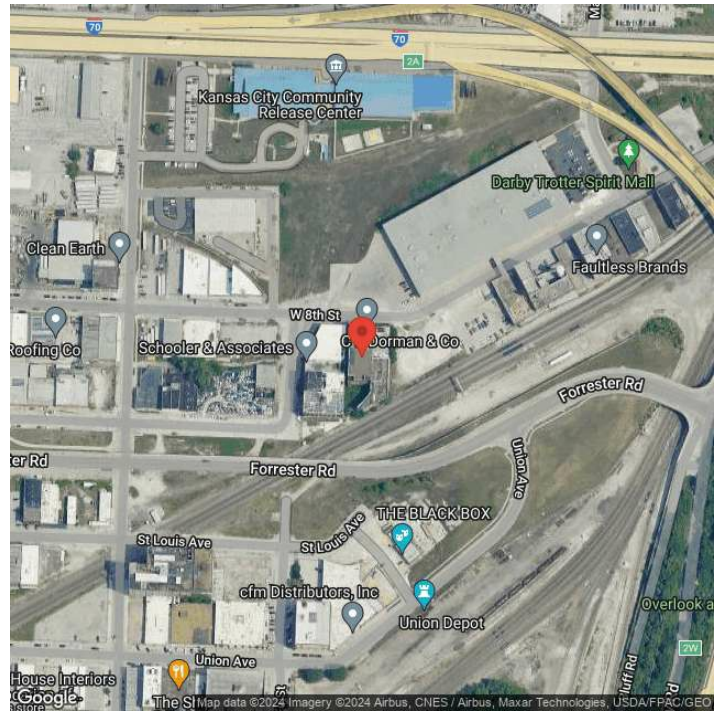
Rail Contact Phone: 402-544-3237

Rail Contact Email: kmbetswo@up.com

Utilities

Electric: Evergy

Property Images



Subash Alias | CEO | Missouri Partnership
120 S. Central Ave, Suite 1535 | Saint Louis, MO 63105 | (877) 725-0949 | Subash@MissouriPartnership.com