



Building Type:	Multifamily
Available SF:	99,649
Total SF:	99,649
Year Built:	1978
Last Updated:	Jul 7, 2025

Economic Development Contact

Benjamin Vickers
Springfield Area Chamber of Commerce
202 S. John Q. Hammons Parkway
Springfield, MO 65806
| ben@springfieldchamber.com

Realtor/Owner Contact

Cody Doran
| cody.doran@svn.com

Property and Area Description

SVN is pleased to present the opportunity to acquire Craigmont I & III Apartments located at 605 & 730 S Wabash Avenue, Springfield, MO, 65802 (Greene County). The properties were built in 2 phases with Craigmont III being built in 1978 and Craigmont I constructed in 1979. Both phases are 100% HAP Contract properties with HAP expiration dates of 2024 (CPI) and 2025 (CPIII) - both under Option 2 renewals. The properties are located in a QCT and are eligible for a LIHTC re-syndication. The properties consist of 64 Townhomes, 24 Flats, and 18 Detached SFHs for a total of 106 units collectively. Tenants are responsible for Electricity, Gas, and Water/Sewer, while the landlord is responsible for Garbage/Trash. The properties have received high REAC scores (88c - CPIII; 86c - CPI) in 2022. Craigmont is a great acquisition for adding scale or entering the Springfield, MO market. The property is adjacent to a city park and is close to schools, churches, shopping, and the Boys and Girls Club. The city bus stop is nearby. The almost mile-long sidewalk around the property offers walking enthusiasts a nice trail. There are benches and 2 picnic areas for taking a relaxing break.

Population



Source: ESRI®, 2024

Households



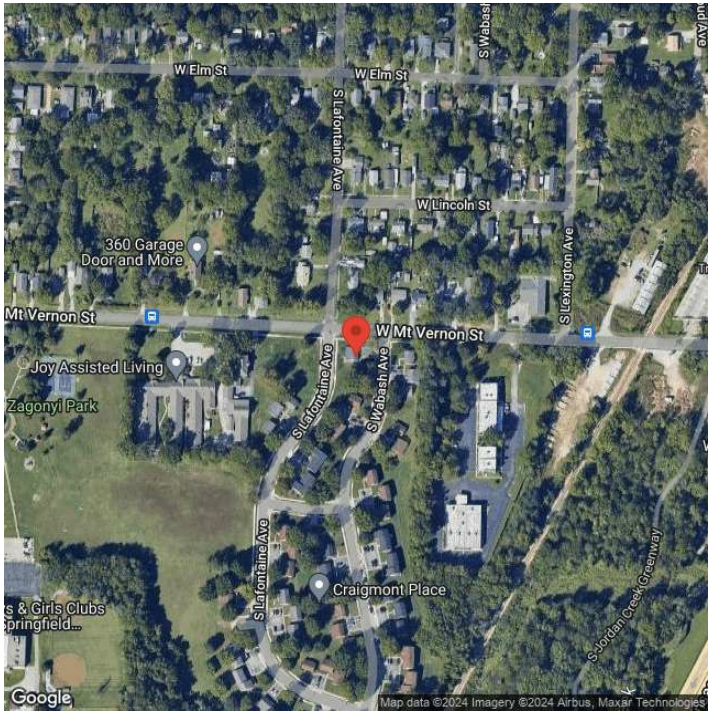
Source: ESRI®, 2024

Transportation

Rail Served: No
Rail Accessible: No
Rail Infrastructure in Place: Unknown

Property Images





Subash Alias | CEO | Missouri Partnership
120 S. Central Ave, Suite 1535 | Saint Louis, MO 63105 | (877) 725-0949 | Subash@MissouriPartnership.com