

Self-Storage Development Opportunity5.28 +/- AC of Entitled Development Land

2998 NE Barry Rd | Kansas City, MO | US | Clay County
Available SF: 96,765



Building Type:	Other
Available SF:	96,765
Total SF:	96,765
Last Updated:	Jul 4, 2025

Economic Development Contact

Tina Chace
Platte County Economic Development Council
11724 NW Plaza Circle, Suite 400
Kansas City, MO 64153
(816) 270-2119 | tchace@plattecountyedc.com

Steven Anthony
EDC of Kansas City, MO
300 Wyandotte St, Suite 400
Kansas City, MO 64105
(816) 691-2117 | santhony@edckc.com

Realtor/Owner Contact

Ben Nelson
| ben@windfieldrealestate.com

Property and Area Description

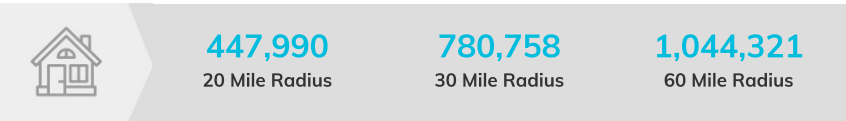
The project is fully prepared for development. It has received approval for the Final Development Plan and has undergone mass grading. Additionally, it comes with a 90% set of plans included in the purchase. These completed elements indicate readiness and save potential buyers significant time and cost. By skipping the lengthy process of zoning approvals and design intricacies, Staley Self-Storage allows for swift structural engineering, saving buyers potentially months or even years of challenges and expenses.

Population



Source: ESRI®, 2024

Households



Source: ESRI®, 2024

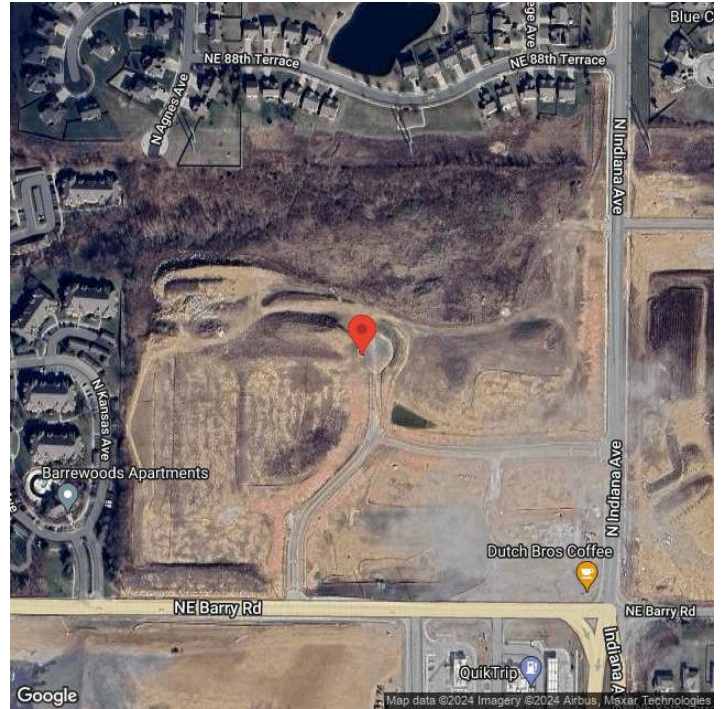
Transportation

Rail Served: No
Rail Accessible: No
Rail Infrastructure in Place: Unknown

Utilities

Electric: Ameren, Evergy

Property Images



Subash Alias | CEO | Missouri Partnership
120 S. Central Ave, Suite 1535 | Saint Louis, MO 63105 | (877) 725-0949 | Subash@MissouriPartnership.com