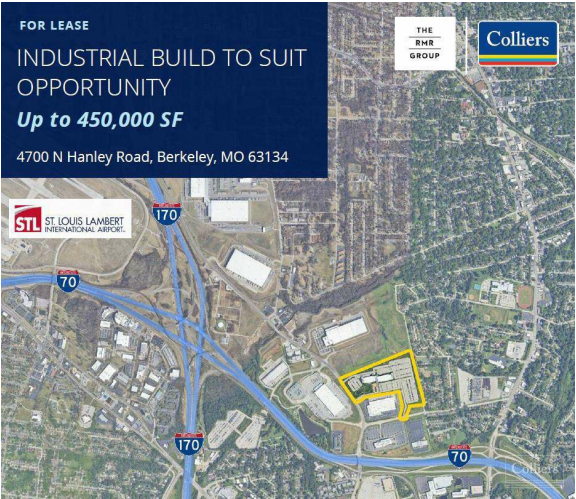


Industrial Build to Suit Opportunity
4700 N Hanley Rd | Berkeley, MO | US | St. Louis County
Available SF: 450,000



Building Type:	Industrial
Available SF:	450,000
Total SF:	450,000
Last Updated:	May 7, 2025

Realtor/Owner Contact
Dan Lesinski

Property and Area Description

Up to 450,000 SF Located in NorthPark 35-acre site Economic incentive programs available Proximity to major throughfares Abundant competitive labor force Mass transit proximity Frontage along N Hanley Road Expansion/storage opportunity

Population



Source: ESRI®, 2024

Households



Source: ESRI®, 2024

Transportation

Rail Served: No
Rail Accessible: No
Rail Infrastructure in Place: Unknown

Utilities

Electric: Ameren

Property Images



Subash Alias | CEO | Missouri Partnership
120 S. Central Ave, Suite 1535 | Saint Louis, MO 63105 | (877) 725-0949 | Subash@MissouriPartnership.com