



Building Type:	Commercial
Available SF:	15,061
Within City Limits:	Yes
Last Updated:	Apr 16, 2021

Economic Development Contact

Rick McDowell
Lee's Summit Economic Development Council
218 SE Main Street
Lee's Summit, MO 64063
| rmcowell@leessummit.org

Realtor/Owner Contact

Shannon E. Simmermon, P.C.
CEAH
816-795-8100 ext. 117 |
ssimmermon@ceahrealtors.com

Property and Area Description

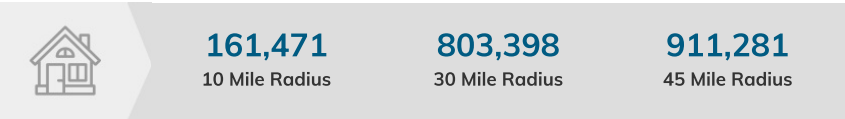
Available 1/1/2021, fully finished 100% HVAC, three 12'x14' drive in doors, two 9'x10' dock high doors, ample parking for customers & employees, located near I-470 where more than 82,000 cars pass daily, half-mile from I-470 & Strother full diamond interchange, lease rates negotiable depending on necessary tenant improvements/modifications

Population



Source: ESRI®, 2024

Households

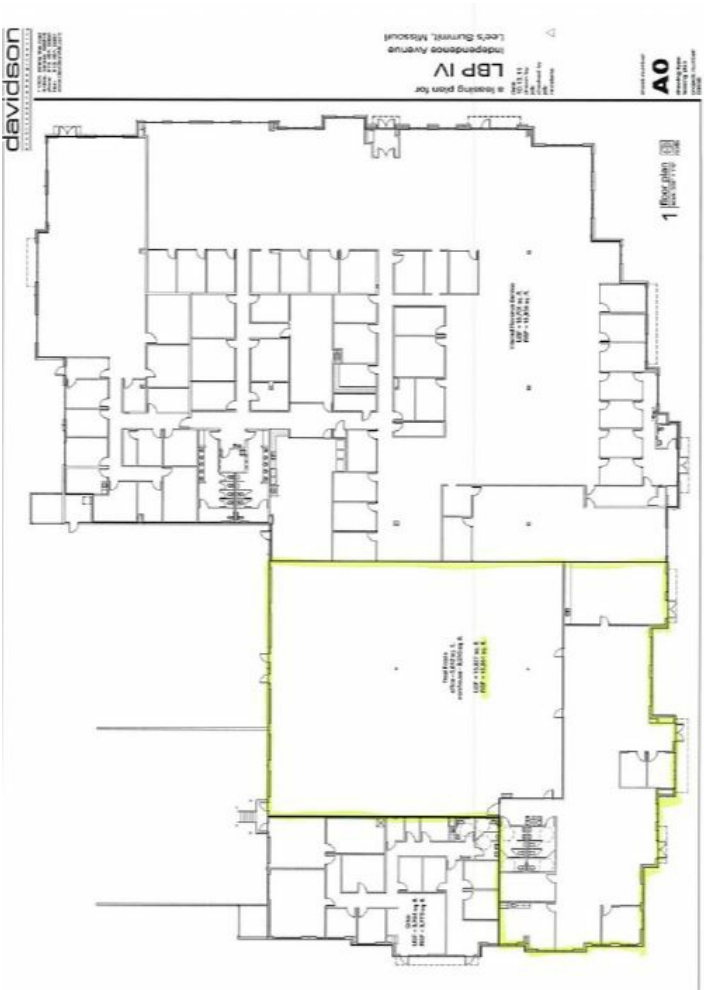
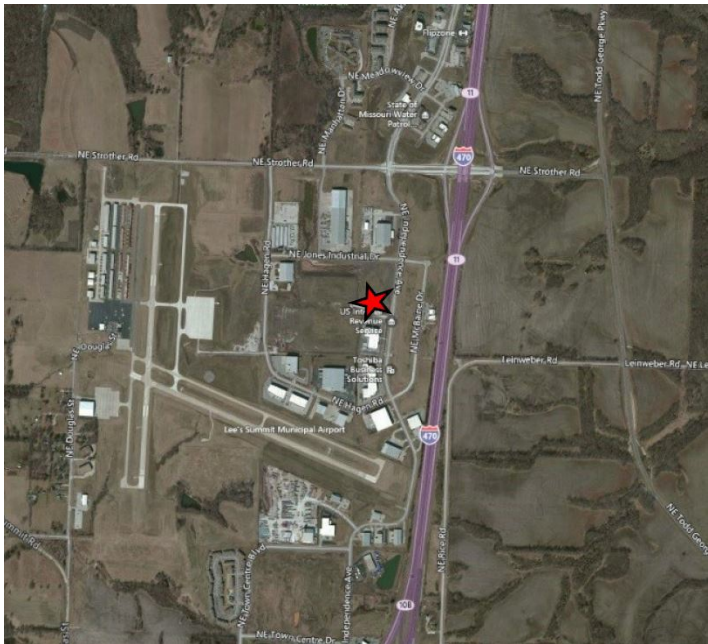


Source: ESRI®, 2024

Transportation

Rail Served: Unknown
Rail Served By: Unknown
Rail Accessible: Unknown
Rail Infrastructure in Place: Unknown

Property Images



Teresa Evans | Interim Executive Director | Lee's Summit Economic Development Council
218 SE Main Street | Lee's Summit, MO 64063 | (816) 525-6617 | tevans@leessummit.org