

**Lakewood Business Park**  
2201 NE Town Centre Blvd | Lee's Summit, MO | US | Jackson County  
Available SF: 25,000 | Lease Rate: \$7.5



|                |             |
|----------------|-------------|
| Building Type: | Industrial  |
| Available SF:  | 25,000      |
| Total SF:      | 125,000     |
| Lease Rate:    | \$7.5       |
| Last Updated:  | Jul 4, 2025 |

Economic Development Contact

**Teresa Evans**  
Lee's Summit Economic Development Council  
218 SE Main Street  
Lee's Summit, Missouri 64063  
(816) 525-6617 | [tevans@leessummit.org](mailto:tevans@leessummit.org)

Realtor/Owner Contact

John Stafford

Property and Area Description

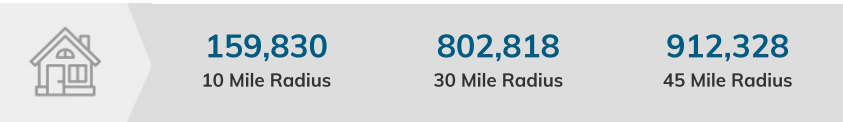
Lakewood Business Park space available. Excellent access to I-470, adjacent to Lee's Summit Airport.

Population



Source: ESRI®, 2024

Households



Source: ESRI®, 2024

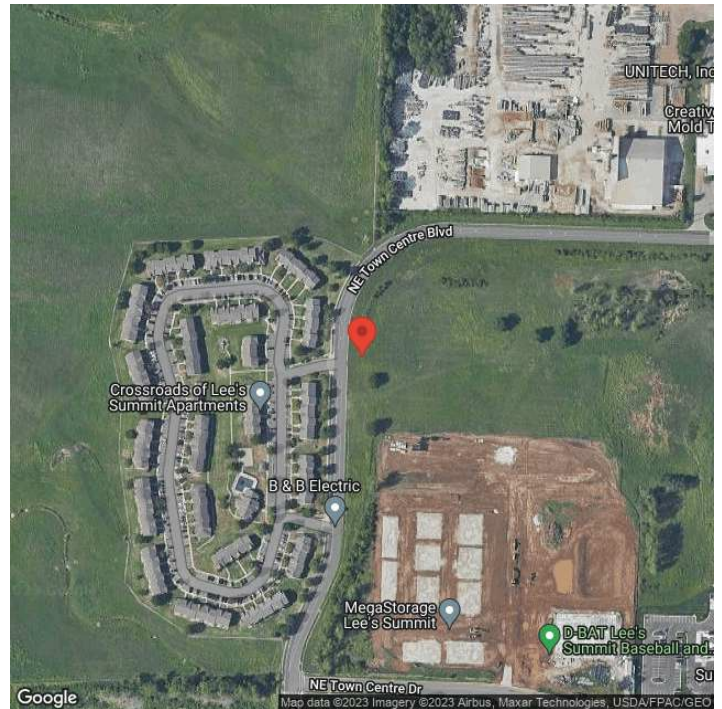
Transportation

**Rail Served:** No  
**Rail Accessible:** No  
**Rail Infrastructure in Place:** Unknown

Utilities

**Electric:** Evergy

## Property Images



**Teresa Evans | Interim Executive Director | Lee's Summit Economic Development Council**  
**218 SE Main Street | Lee's Summit, MO 64063 | (816) 525-6617 | [tevans@leessummit.org](mailto:tevans@leessummit.org)**