

521 SE 2nd Street
521 SE 2nd St, Suite suite b | Lee's Summit, MO | US | Jackson County
Available SF: 1,200 | Lease Rate: \$15



Building Type:	Office
Available SF:	1,200
Total SF:	1,200
Lease Rate:	\$15
Last Updated:	Nov 8, 2024

Economic Development Contact

Teresa Evans
Lee's Summit Economic Development Council
218 SE Main Street
Lee's Summit, Missouri 64063
(816) 525-6617 | tevens@leessummit.org

Realtor/Owner Contact

Garrett Cohoon
| gcohoon@blockandco.com

Property and Area Description

1st floor end cap available May 1st, 2024 Located near downtown Lee's Summit, MO Turn-key office with restroom inside Reception area with 4 private offices Exclusive parking for 3 tenants Co-tenants include Expressions Dental and Archidigital Imaging

Population

	359,970 10 Mile Radius	1,955,402 30 Mile Radius	2,276,796 45 Mile Radius
--	---------------------------	-----------------------------	-----------------------------

Source: ESRI®, 2024

Households

	143,804 10 Mile Radius	792,592 30 Mile Radius	913,347 45 Mile Radius
--	---------------------------	---------------------------	---------------------------

Source: ESRI®, 2024

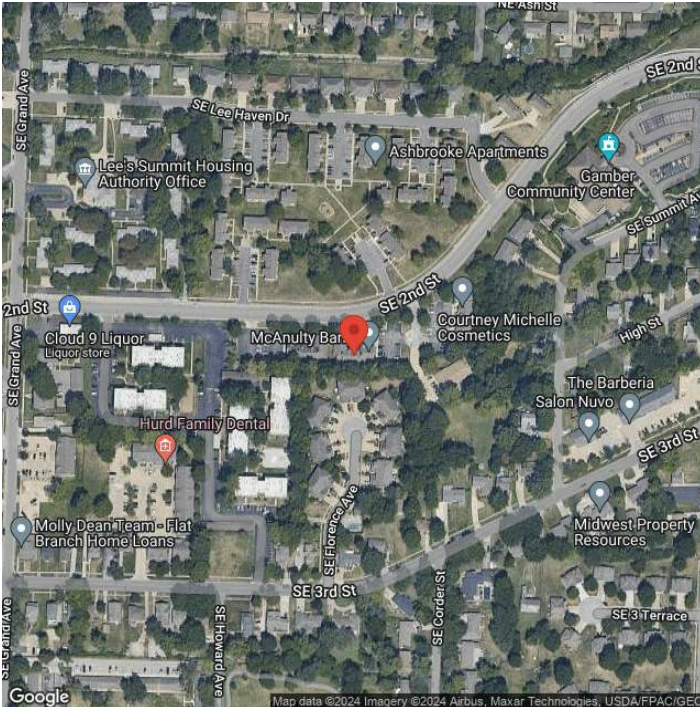
Transportation

Rail Served: No
Rail Accessible: No
Rail Infrastructure in Place: Unknown

Utilities

Electric: Everygy

Property Images



Teresa Evans | Interim Executive Director | Lee's Summit Economic Development Council
218 SE Main Street | Lee's Summit, MO 64063 | (816) 525-6617 | tevens@leessummit.org