

Former Automotive Dealership
SE M 291 Hwy | Lee's Summit, MO | US | Jackson County
Available SF: 5,476 | Sale Price: \$1,500,000



Building Type:	Other
Available SF:	5,476
Total SF:	5,476
Sale Price:	\$1,500,000
Last Updated:	Jul 18, 2025

Economic Development Contact

Teresa Evans
Lee's Summit Economic Development Council
218 SE Main Street
Lee's Summit, Missouri 64063
(816) 525-6617 | tevans@leessummit.org

Realtor/Owner Contact

Bill Maas
| bmaas@blockandco.com

Property and Area Description


Prime location New Intersection to begin in 2025 with frontage on Blue Parkway and 7th Terrace Multiple adaptable uses High visibility and traffic Pad site opportunity Five bays

Population

	338,103 10 Mile Radius	1,936,126 30 Mile Radius	2,276,666 45 Mile Radius
---	----------------------------------	------------------------------------	------------------------------------

Source: ESRI®, 2024

Households

	134,059 10 Mile Radius	784,996 30 Mile Radius	913,211 45 Mile Radius
---	----------------------------------	----------------------------------	----------------------------------

Source: ESRI®, 2024

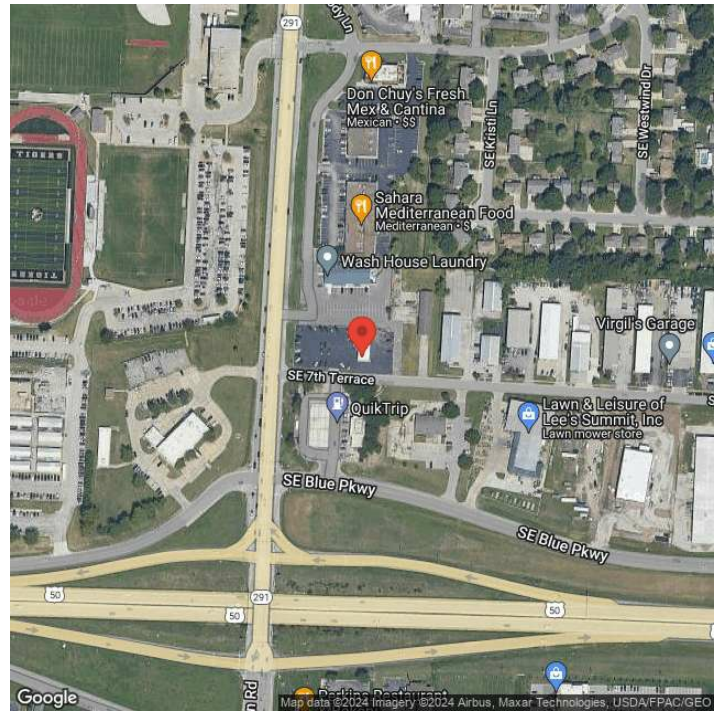
Transportation

Rail Served: No
Rail Accessible: No
Rail Infrastructure in Place: Unknown

Utilities

Electric: Everygy

Property Images



Teresa Evans | Interim Executive Director | Lee's Summit Economic Development Council
218 SE Main Street | Lee's Summit, MO 64063 | (816) 525-6617 | tevans@leessummit.org