

Automotive Dealership
SE M 291 Hwy | Lee's Summit, MO | US | Jackson County
Available SF: 5,476 | Sale Price: \$2,000,000



Building Type:	Retail
Available SF:	5,476
Total SF:	5,476
Sale Price:	\$2,000,000
Last Updated:	Aug 26, 2024

Economic Development Contact

Teresa Evans
Lee's Summit Economic Development Council
218 SE Main Street
Lee's Summit, Missouri 64063
(816) 525-6617 | tevans@leessummit.org

Realtor/Owner Contact

Bill Maas
| bmaas@blockandco.com

Property and Area Description


PLEASE DO NOT DISTURB CURRENT TENANT Prime location New intersection coming in 2024 with frontage on Blue Parkway and 7th Terrace High visibility and traffic Pad site opportunity Five bays

Population

	338,103 10 Mile Radius	1,936,126 30 Mile Radius	2,276,666 45 Mile Radius
---	----------------------------------	------------------------------------	------------------------------------

Source: ESRI®, 2024

Households

	134,059 10 Mile Radius	784,996 30 Mile Radius	913,211 45 Mile Radius
---	----------------------------------	----------------------------------	----------------------------------

Source: ESRI®, 2024

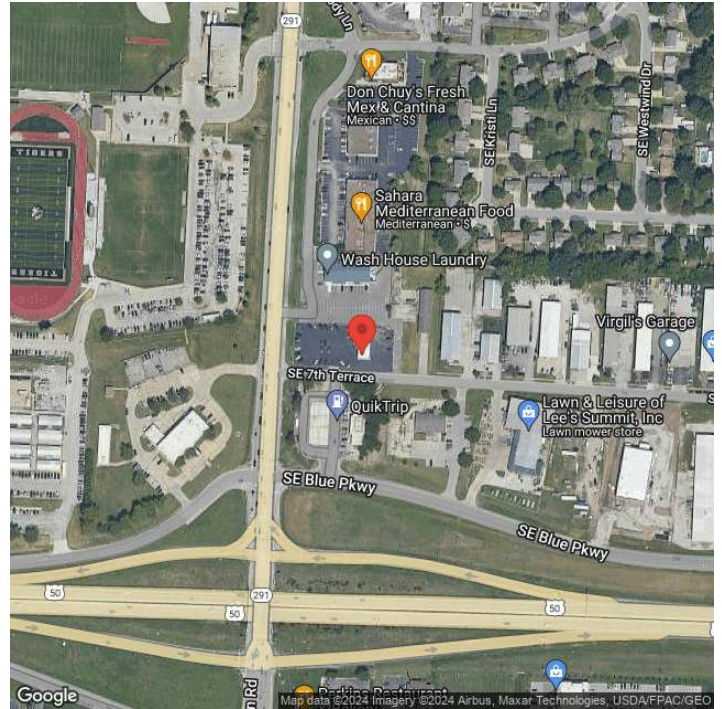
Transportation

Rail Served: Yes
Rail Served By: Union Pacific Railroad
Rail Accessible: Yes
Rail Infrastructure in Place: Unknown
Rail Contact: Kate M. Betsworth
Rail Contact Phone: 402-544-3237
Rail Contact Email: kmbetswo@up.com

Utilities

Electric: Evergy

Property Images



Teresa Evans | Interim Executive Director | Lee's Summit Economic Development Council
218 SE Main Street | Lee's Summit, MO 64063 | (816) 525-6617 | tevans@leessummit.org