

# Downtown North Platte Commercial Building

600 N Chestnut St | North Platte, NE | US | Lincoln County  
Available SF: 24,847



Nebraska Public Power District  
Always there when you need us



Building Type:	Industrial, Office
Available SF:	24,847
Total SF:	24,847
Last Updated:	Jun 2, 2025

## Economic Development Contact

**Gary Person**  
North Platte Chamber & Development Corporation  
502 South Dewey  
North Platte, NE 69101  
(308) 532-4966 | gary@nparea.com

**Cassie Condon**  
North Platte Area Chamber & Development  
502 S. Dewey St  
North Platte, NE 69101  
(308) 532-4966 | cassie@nparea.com

## Realtor/Owner Contact

**Pete Meginnis**  
| pete.meginnis@cbre.com

## Property and Area Description

+/-24,847 SF Flex | For Sale Office 12,113 SF Warehouse 12,734 SF Mezzanine 3,696 SF Class Commercial - Flex Drive-in Doors Two Lot Size 1.44 AC / 62,568 SF Dock-high Doors Five total, two on the east side and three additional doors on north side (previously used for rail delivery) Note: rail is no longer there Building Size +/-24,847 SF HVAC Yes, throughout Year Built 1980 Sprinklered Yes Floors One + mezzanine storage County Lincoln Parcel Number 0003175.00 Zoning Light Manufacturing

## Population

	<b>27,529</b> 10 Mile Radius	<b>31,541</b> 20 Mile Radius	<b>34,304</b> 30 Mile Radius
--	---------------------------------	---------------------------------	---------------------------------

Source: ESRI®, 2024

## Households

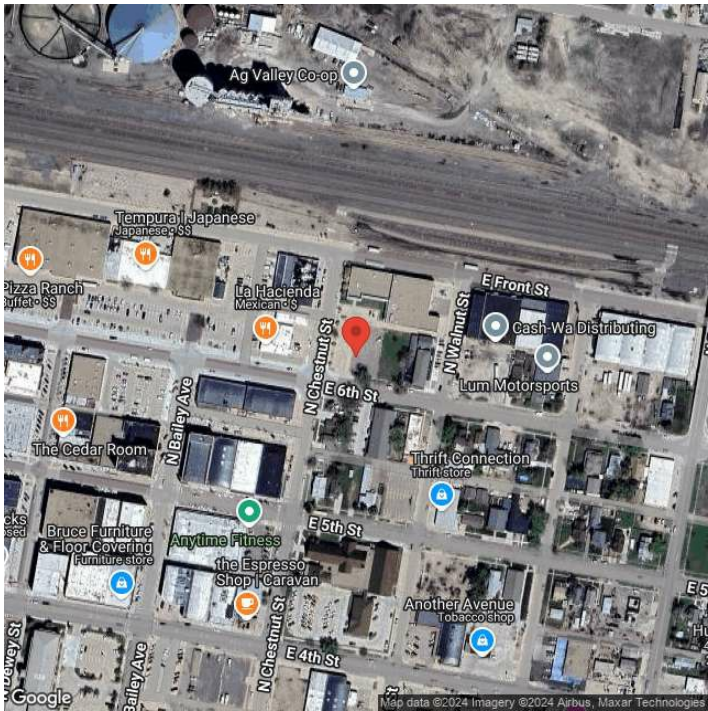
	<b>11,870</b> 10 Mile Radius	<b>13,521</b> 20 Mile Radius	<b>14,601</b> 30 Mile Radius
--	---------------------------------	---------------------------------	---------------------------------

Source: ESRI®, 2024

## Transportation

**Rail Served:** Yes  
**Rail Served By:** Union Pacific Railroad  
**Rail Accessible:** Yes  
**Rail Infrastructure in Place:** Unknown  
**Rail Contact:** Darren Wisniski  
**Rail Contact Phone:** 402-672-1983  
**Rail Contact Email:** djwisnis@up.com

Property Images



Nicole Sedlacek, CECD | Economic Development Manager | Nebraska Public Power District  
PO Box 499 | Columbus, Nebraska 68602 | (402) 563-5534 | [njsedla@nppd.com](mailto:njsedla@nppd.com)