

26 Units / Multifamily | Special Purpose - Scribner, Nebraska

150 Poppe Dr | Scribner, NE | US | Dodge County
Available SF: 21,777 | Sale Price: \$1,495,000



Building Type:	Multifamily
Available SF:	21,777
Total SF:	21,777
Sale Price:	\$1,495,000
Last Updated:	May 12, 2025

Economic Development Contact

Elizabeth Valla
Scribner Economic Development
530 Main Street
Scribner, NE 68057
(402) 719-8589 | econdev@scribner-ne.gov

Elmer Armstrong
City of Scribner- City Administrator
530 Main St, PO Box D
Scribner, Nebraska 68057
(402) 664-3231 | clerk@scribner-ne.gov

Realtor/Owner Contact

Graham Nabity
| graham.nabity@cbre.com

Property and Area Description

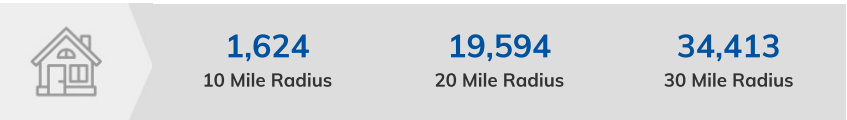
26 Total Studio/1-BR Units, Multiple Common Areas, Many Possibilities 150 Poppe Drive Building 1 / 13 Studio/1-Bathroom Units, Building Size: 11,827 SF Units: 13 Apartments Stories: One Parking: At your door Porches/Patios: Two covered / Front and side Year Built: 2006 Unit Sizes: 420 SF - 510 SF + Former assisted living housing + 13 studio/1-bathroom apartments + Bathrooms in each unit; seven ADA compliant + Common areas include living, dining and family rooms, bathrooms, workout room and two sitting areas + Other areas include kitchen, pantry, laundry and two private offices 180 Poppe Drive Building 2 / 13 Studio/1-Bathroom Units Building Size: 9,950 SF Units: 13 Apartments Stories: One Parking: At your door Porches/Patios: One covered Year Built: 2001 Unit Sizes: 420 SF - 510 SF + Former assisted living housing + 13 studio/1-bathroom apartments + ADA compliant bathrooms in each unit + Common areas include living, dining and family rooms and bathroom + Other areas include kitchen, laundry and private office 150 Poppe Drive Building 1 / 13 Studio/1-Bathroom Units Lot Size: 2.88 AC total / Flat lot 180 Poppe Drive Building 2 / 13 Studio/1-Bathroom Units Lot Size: 2.88 AC total / Flat lot

Population



Source: ESRI®, 2024

Households

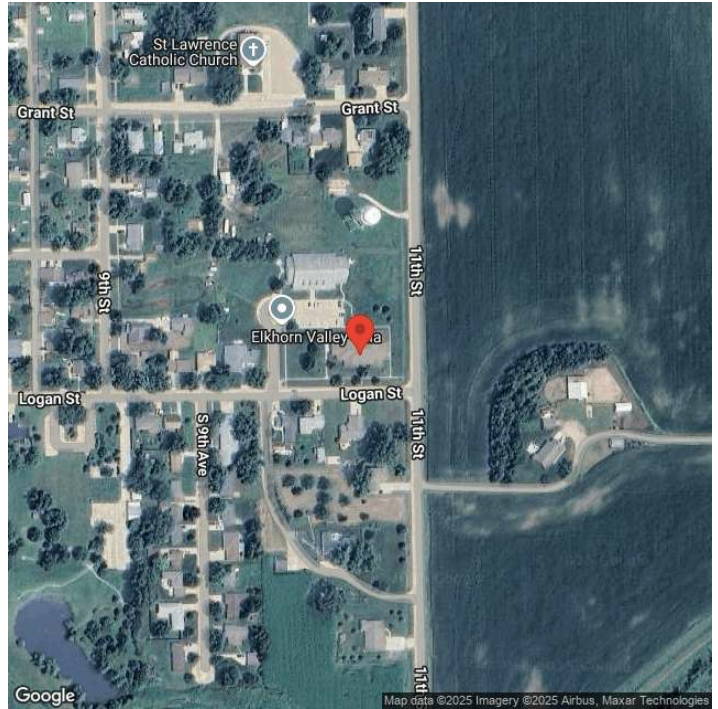


Source: ESRI®, 2024

Transportation

Rail Served: No
Rail Accessible: No
Rail Infrastructure in Place: Unknown

Property Images



Nicole Sedlacek, CECD | Economic Development Manager | Nebraska Public Power District
PO Box 499 | Columbus, Nebraska 68602 | (402) 563-5534 | njsedla@nppd.com