

600 Technology Drive (Data Center) - Former Enterprise Campus

600 Technology Drive | Weldon Spring, MO | US | St. Charles County
Available SF: 138,000



Building Type:	Office, Flex Tech
Available SF:	138,000
Total SF:	138,000
Number of Stories:	4
Ceiling Peak:	Unknown Ft.
Ceiling Eaves:	Unknown Ft.
Expandable:	Yes
Zoning:	Office, Commercial
Site Size:	26.74 Acres
Year Built:	2000
Former Use:	Data Center
Specialty Features:	Data Center
Can Subdivide:	Unknown
Within City Limits:	Yes
Construction Type:	Unknown
Floor Type:	Unknown
Last Updated:	Jun 23, 2023

Economic Development Contact

Scott Drachnik
EDC of St. Charles County
5988 Mid Rivers Mall Dr.
St. Charles, MO 63304
(636) 229-5281 | sdrachnik@edcscc.com

Bill Hanks
City of Weldon Spring
5401 Independence Rd
City of Weldon Spring, 93 63304
| bhanks@weldonspring.org

Realtor/Owner Contact

Rick Dames
Avison Young
314-785-7605 | Rick.Dames@avisonyoung.com

Property and Area Description

A 108,000 RSF purpose-built data center with five (5) Uninterruptible Power Systems (UPS) capable of 10.2 MW or 100% redundancy of 5.1 MW. The entire 26.74 acre campus available includes a four (4) story, 138,000 RSF office building with additional land/parking for expansion.

Population



Source: ESRI®, 2024

Households



Source: ESRI®, 2024

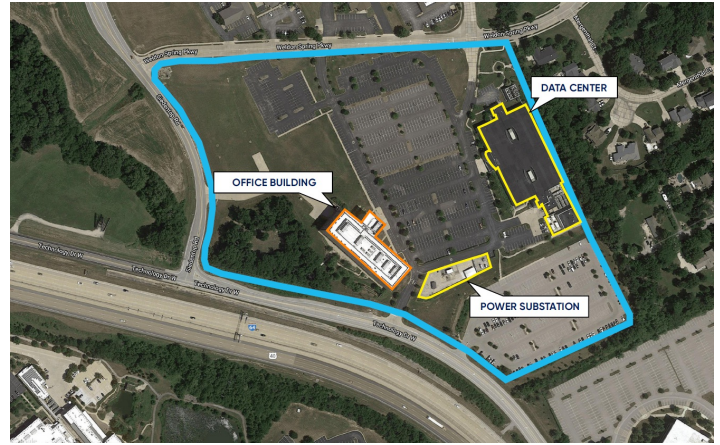
Transportation

Nearest Highway: Highway 94 (less than 1/2 mile mi.)
Nearest Interstate: I-64 (1 Mile mi.)
Nearest Airport: St. Louis Lambert International Airport (20 miles mi.)
Nearest Commercial Airport: St. Louis Lambert International Airport (20 miles mi.)
Rail Served: Unknown
Rail Served By: Unknown
Rail Accessible: Unknown
Rail Infrastructure in Place: Unknown

Utilities

Electric: Cuivre River Electric Cooperative, Inc.
Natural Gas: Spire
Water: Missouri American Water
Sewer: Duckett Creek Sanitary District

Property Images



Scott J. Drachnik | President & CEO | EDC Business & Community Partners
5988 Mid Rivers Mall Drive | St. Charles, MO 63304 | (636) 229-5281 | sdrachnik@edcscs.com