



Building Type:	Other
Available SF:	201,683
Total SF:	201,683
Last Updated:	Aug 21, 2024

Economic Development Contact

Julie Powers
City of St. Peters, Missouri
P. O. Box 9
St. Peters, Missouri 63376
(636) 477-6600 | jpower@stpetersmo.net

Cathy Pratt
Cathy Pratt
P. O. Box 9
St. Peters, Missouri 63376
(636) 477-6600 | cpratt@stpetersmo.net

Realtor/Owner Contact

Cushman & Wakefield Wakefield

Population



Source: ESRI®, 2024

Households



Source: ESRI®, 2024

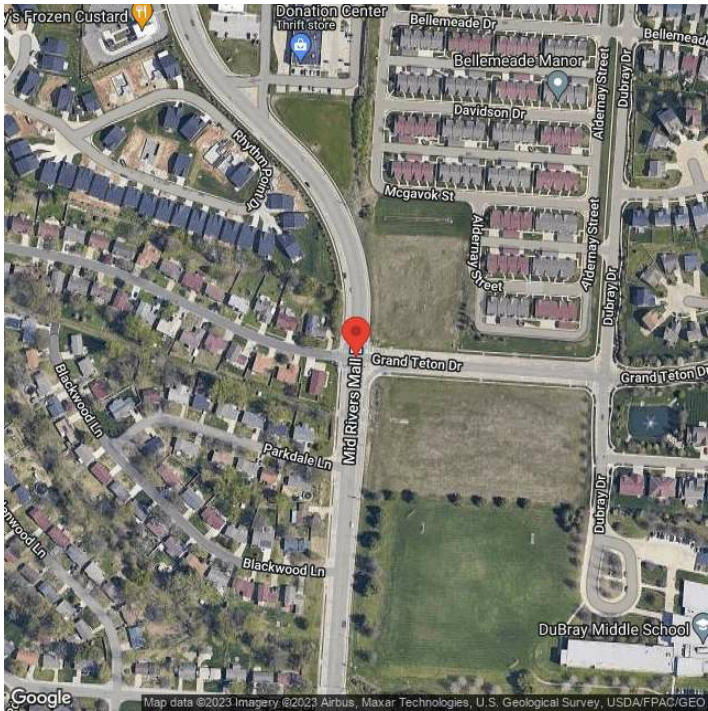
Transportation

Rail Served: No
Rail Accessible: No
Rail Infrastructure in Place: Unknown

Utilities

Electric: Ameren

Property Images



Scott J. Drachnik | President & CEO | EDC Business & Community Partners
5988 Mid Rivers Mall Drive | St. Charles, MO 63304 | (636) 229-5281 | sdrachnik@edccsc.com