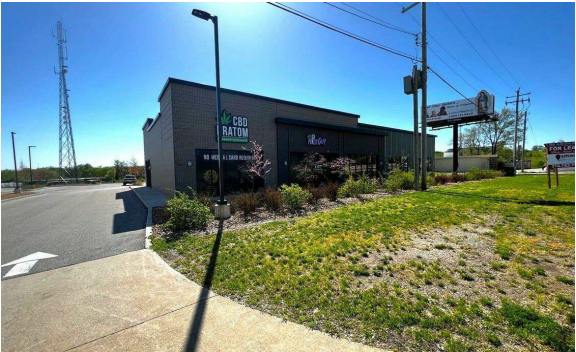


1550-1560 Veterans Memorial Pkwy

1550 Veterans Memorial Pkwy, Suite 1560 Veterans Memorial Parkway | St. Charles, MO | US | St. Charles County
Available SF: 7,200 | Lease Rate: \$24



Building Type:	Retail
Available SF:	7,200
Total SF:	7,200
Lease Rate:	\$24
Last Updated:	May 7, 2025

Realtor/Owner Contact

Drew Clary
| dclary@intcre.com

Property and Area Description

1560 Veterans Memorial Parkway is a retail center offering highway visibility directly on the heavily trafficked Veterans Memorial Highway. Located on Veterans Memorial Parkway with direct visibility from I-70. Located between the Missouri River and Hwy 94, this building offers a prime location for retail or a restaurant on a heavily traveled route.

Population



Source: ESRI®, 2024

Households



Source: ESRI®, 2024

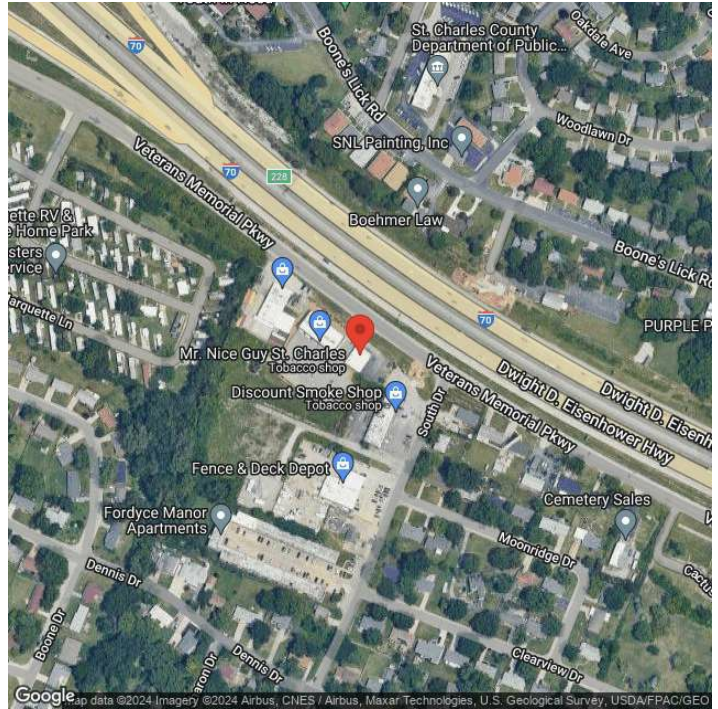
Transportation

Rail Served: No
Rail Accessible: No
Rail Infrastructure in Place: Unknown

Utilities

Electric: Ameren

Property Images



Scott J. Drachnik | President & CEO | EDC Business & Community Partners
5988 Mid Rivers Mall Drive | St. Charles, MO 63304 | (636) 229-5281 | sdrachnik@edccsc.com