



Property and Area Description

Lease a storefront space in downtown historic Red Wing or an affordable basement space for storage, a gym space or other creative flexible use. This property was built as Goodhue County bank and is being converted into a mixed-use property in 2023. Lease 500--2,000 square feet of space with large display windows, exterior building signage and excellent pedestrian access. Downtown Red Wing is home to many local brands including the infamous Red Wing Shoes. Great opportunities may be available to the right candidate. Build-to-suit options and lease terms negotiable. Additional basement storage available if needed. This property is located in the downtown historic district of Red Wing, on Bush and West 3rd Street. Part of the downtown core, this shopping district has excellent walkability scores, ample free on-street parking and near a public parking ramp for easy client/customer access. Seated on a corner lot, this property offers maximum exposure for retail and office users.

Building Type:	Office
Available SF:	578
Total SF:	578
Year Built:	1920
Last Updated:	May 16, 2025

Population



Source: ESRI®, 2024

Economic Development Contact

Shari Chorney
Red Wing Port Authority
314 West 4th St.
Red Wing, MN 55066
(651) 385-3639 | shari.chorney@ci.red-wing.mn.us

Households



Source: ESRI®, 2024

Realtor/Owner Contact

Cate DeBates
| cate@nainorthstar.com

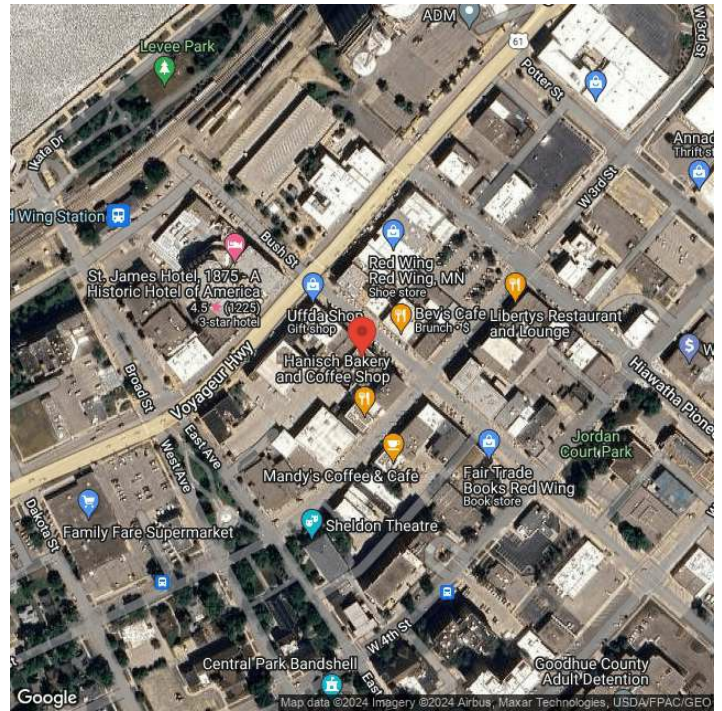
Transportation

Rail Served: No
Rail Accessible: No
Rail Infrastructure in Place: Unknown

Utilities

Electric: Xcel

Property Images



Shari Chorney | Business Development Director | Red Wing Port Authority
419 Bush St. | Red Wing, MN 55066 | (651) 385-3639 | shari.chorney@ci.red-wing.mn.us