

R&R Commerce Park South Warehouse II

11950 S 153rd St, Suite R&R Commerce Park South Warehouse II | Papillion,
NE | US | Sarpy County
Available SF: 42,120 | Lease Rate: \$6.95



Building Type:	Industrial
Available SF:	42,120
Total SF:	42,120
Year Built:	2023
Lease Rate:	\$6.95
Last Updated:	Sep 10, 2025

Economic Development Contact

Lisa A. Scheve
Grow Sarpy
808 Conagra Drive, Suite 400
Omaha, NE 68102
(402) 233-7155 | lscheve@selectgreateromaha.com

Realtor/Owner Contact

Cooper Wilson
| wilson.cooper@rrrealty.com

Property and Area Description

Contact broker for lease information Warehouse II at R&R Commerce Park South is a 151,840 SF Class-A industrial building situated in the largest speculative warehouse park in Omaha, boasting a prime location at South 156th Street and Schram Road. The park offers easy access to Highways 50 and 370 along the I-80 corridor, with two interstate access points within one mile. Contact Broker

Population



Source: ESRI®, 2024

Households

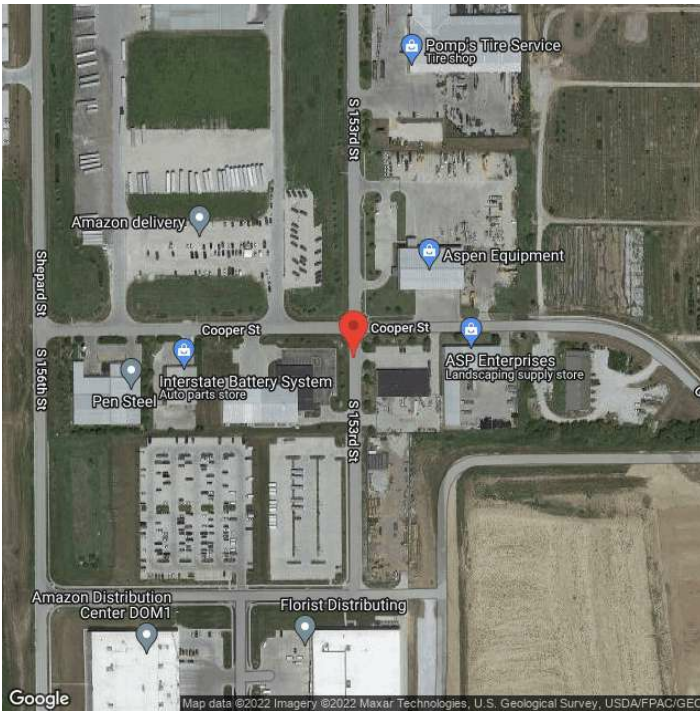


Source: ESRI®, 2024

Transportation

Rail Served: No
Rail Accessible: No
Rail Infrastructure in Place: Unknown

Property Images



Angie Baber | Director, Economic Development | Greater Omaha Economic Development Partnership
808 Conagra Dr. | Omaha, NE 68102 | ababer@selectgreateromaha.com