



Building Type:	Office
Available SF:	14,800
Total SF:	14,800
Year Built:	1980
Lease Rate:	\$14
Last Updated:	Jun 25, 2025

### Economic Development Contact

Angie Baber  
Greater Omaha Economic Development Partnership  
808 ConAgra Drive, Ste 400`  
Omaha, NE 68102  
| ababer@selectgreateromaha.com

### Realtor/Owner Contact

JP Raynor  
| jpraynor@investorsomaha.com

### Property and Area Description

Updated, modern office space located in the prestigious Regency Business Park with great visibility to Interstate 680.

### Population

	885,088	1,005,776	1,489,413
	15 Mile Radius	30 Mile Radius	60 Mile Radius

Source: ESRI®, 2024

### Households

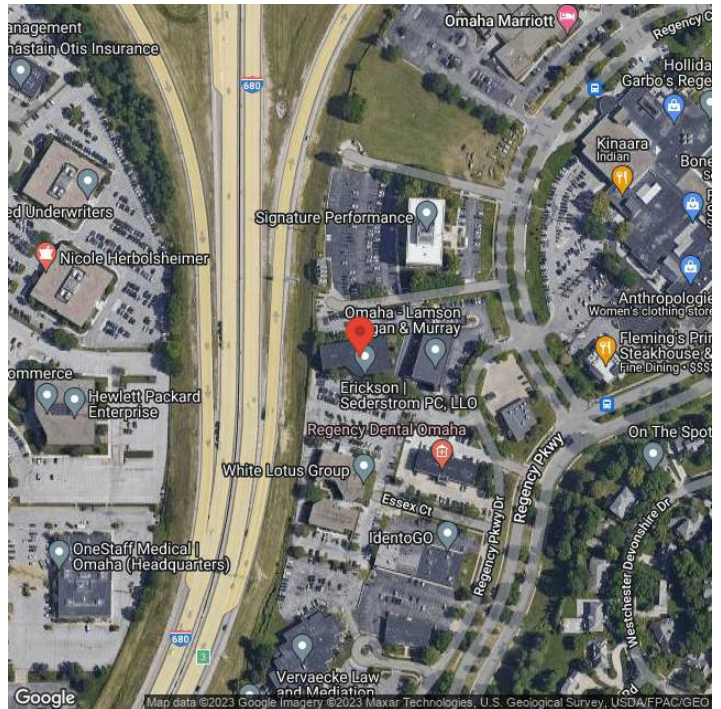
	348,264	395,596	591,387
	15 Mile Radius	30 Mile Radius	60 Mile Radius

Source: ESRI®, 2024

### Transportation

Rail Served: No  
Rail Accessible: No  
Rail Infrastructure in Place: Unknown

## A photograph of a modern, two-story brick office building. The building features large, dark-framed windows and a brick facade. On the left side, the words "SIGNATURE Performance" are visible in white lettering. On the right side, the words "LAW OFFICES ERICKSON SÖDERSTRÖM" are visible in white lettering. In front of the building, there are several large, leafy green trees and a paved parking lot with white parking lines. The sky is clear and blue.



Angie Baber | Director, Economic Development | Greater Omaha Economic Development Partnership  
808 Conagra Dr. | Omaha, NE 68102 | [ababer@selectgreateromaha.com](mailto:ababer@selectgreateromaha.com)